

INSTRUMENT APPROACH CHART

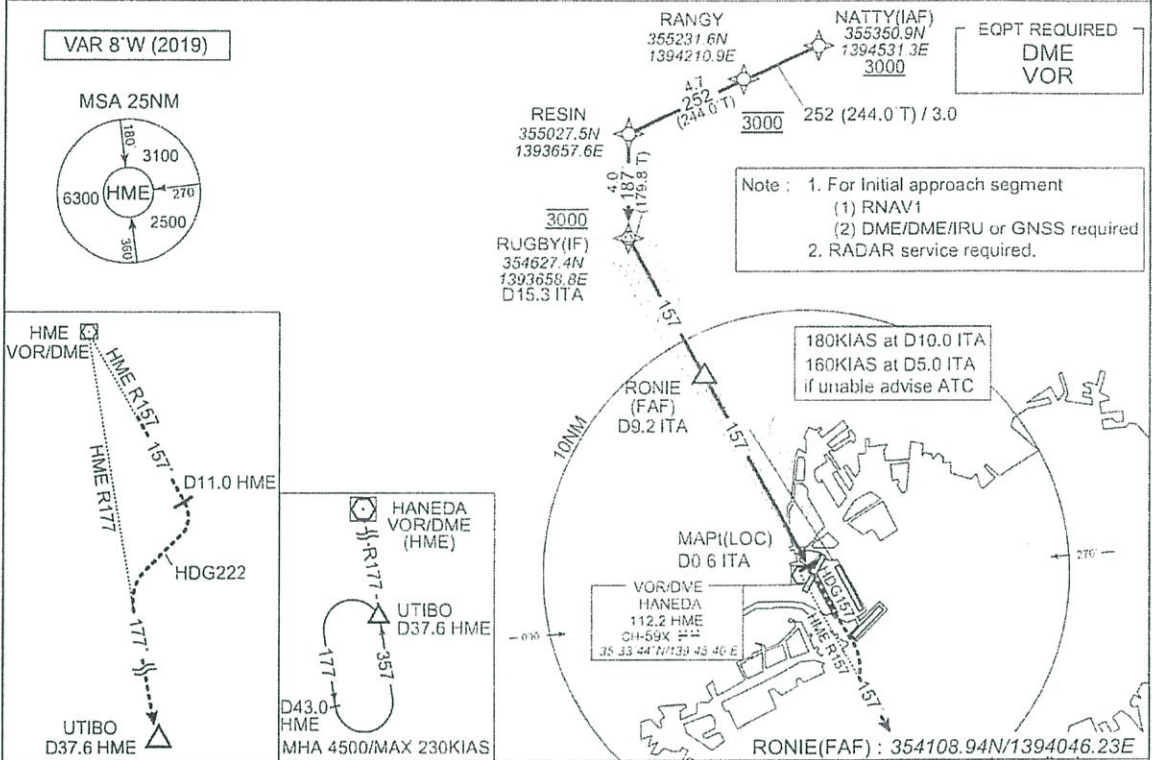
A 滑走路

RJTT / TOKYO INTL

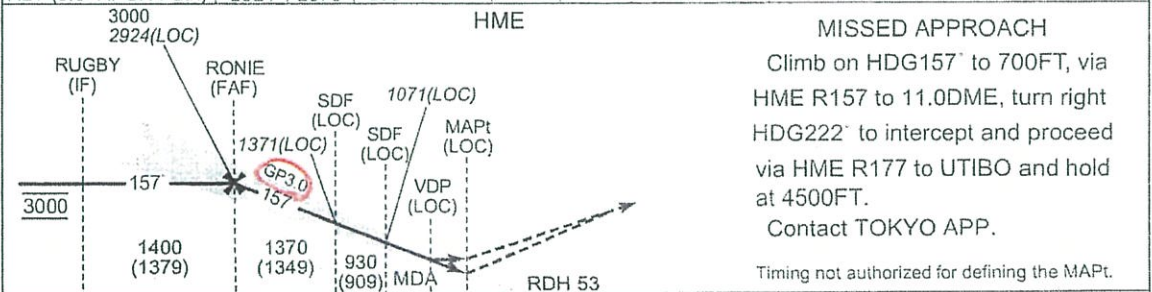
ILS or LOC RWY16R

TOKYO APP 119.1 - 119.4 - 119.7 126.5 - 236.8 - 261.2	ILS - LOC 111.55 ITA ILS-GP 332.75 ILS-DME CH-52Y	TOKYO TOWER 118.1 - 124.35 - 118.575 118.725 - 118.8	RADAR AVBL ATIS 128.8
---	--	--	--------------------------

Simultaneous approach authorized with RWY 16L(ILS)



NM to Next ITA	FAF	9	8	7	6	5	4	3	MAPt
ALT (3.0° APCH Path)	2924	2873	2554	2236	1918	1599	1281	962	-



15.3	9.2	4.3	3.3	1.9	0.6	0.2	DME to ITA
15.1	9.0	4.1	3.2	1.7	0.5	0	NM to THR

Missed APCH climb gradient MNM 5.0%

MINIMA		THR elev. 16		AD elev. 21		
CAT	CAT I		LOC		CIRCLING	
	DA(H)	RVR/CMV	MDA(H)	RVR/CMV	MDA(H)	VIS
A	216 (200)	550	570 (549)	1000	730 (709)	1600
B				1200		2400
C				1600		3200
D						

MINIMA with Missed APCH climb gradient of 2.5% are not established.
Circling is not authorized during the night time, except clockwise circling to RWY16L/22/23/34R/34L.

CHANGE : New PROC

※日本語記載部分は原告代理人作成
AIP Japan
TOKYO INTL

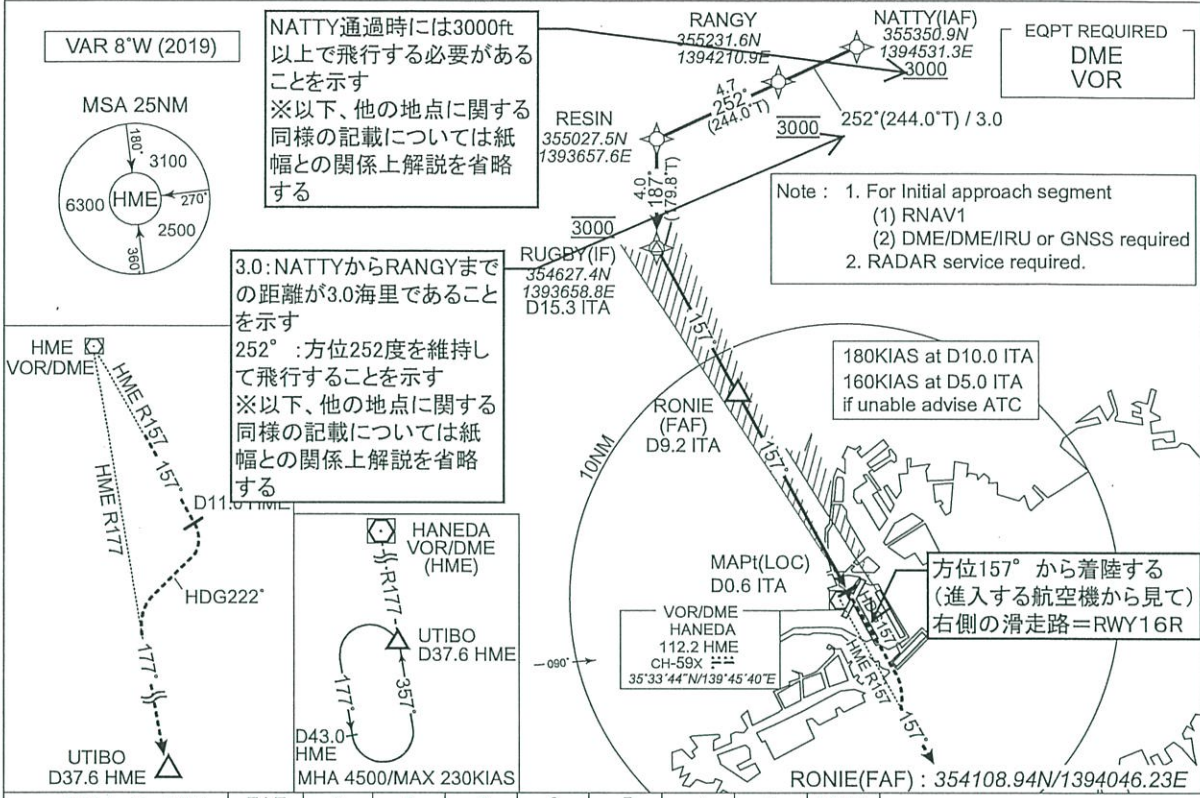
(航空路誌参照番号)
RJTT AD2.24-IAC-35

INSTRUMENT APPROACH CHART

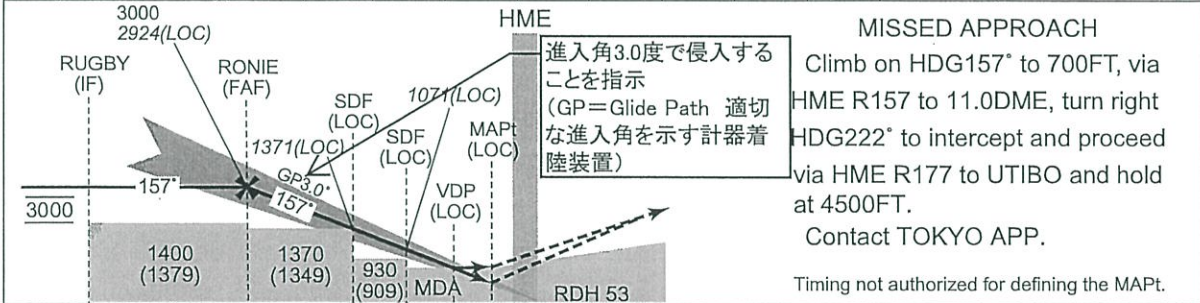
RJTT / TOKYO INTL ILS or LOC RWY16R

TOKYO APP 119.1 - 119.4 - 119.7 126.5 - 236.8 - 261.2	ILS - LOC 111.55 ITA ≡ ILS-GP 332.75 ILS-DME CH-52Y	TOKYO TOWER 118.1 - 124.35 - 118.575 118.725 - 118.8	RADAR AVBL ATIS 128.8
---	--	--	--------------------------

Simultaneous approach authorized with RWY 16L(ILS)



NM to Next ITA	FAF	9	8	7	6	5	4	3	MAPt
ALT (3.0° APCH Path)	2924	2873	2554	2236	1918	1599	1281	962	-



Missed APCH climb gradient MNM 5.0%

MINIMA		THR elev. 16		AD elev. 21		
CAT	CAT I		LOC		CIRCLING	
	DA(H)	RVR/CMV	MDA(H)	RVR/CMV	MDA(H)	VIS
A	216 (200)	550	570 (549)	1000	730 (709)	1600
B				1200		2400
C				1600		3200
D						

MINIMA with Missed APCH climb gradient of 2.5% are not established.
Circling is not authorized during the night time, except clockwise circling to RWY16L/22/23/34R/34L.

CHANGE : New PROC

「変更点:新しい方式(飛行経路)」

INSTRUMENT APPROACH CHART

A 滑走路

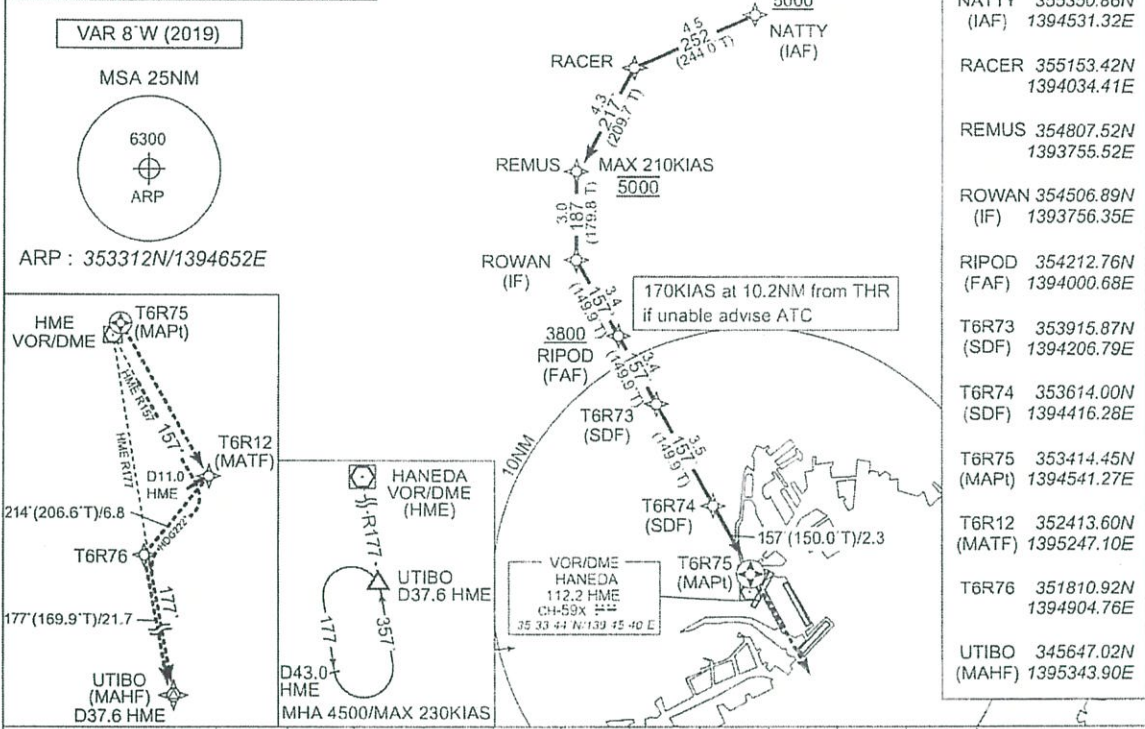
RJTT / TOKYO INTL

RNAV (GNSS) RWY16R

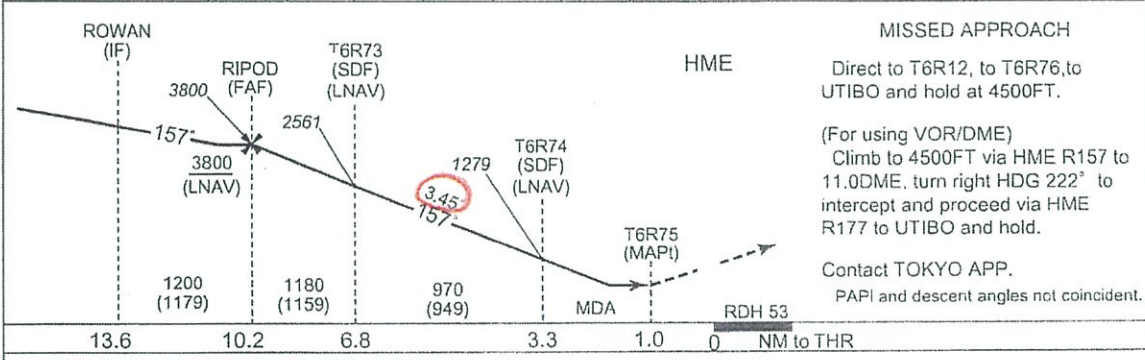
TOKYO APP 119.1 - 119.4 - 119.7 126.5 - 236.8 - 261.2	1 DME/DME not authorized. 2 RADAR service required. 3 GNSS required.	TOKYO TOWER 118.1 - 124.35 - 118.575 118.725 - 118.8	RADAR AVBL ATIS 128.8
---	--	--	--------------------------

Simultaneous approach authorized with RWY 16L(RNAV)

Baro-VNAV not authorized below -10°C



NM to Next FIX	FAF	9	8	7	6	5	4	3	2	1	MAPt
ALT (3.45 APCH Path)	3800	3734	3367	3001	2635	2268	1902	1536	1169	803	-



Missed APCH climb gradient MNM 5.0%

MINIMA		THR elev. 16		AD elev. 21		
CAT	LNAV/VNAV		LNAV		CIRCLING	
	DA(H)	RVR/CMV	MDA(H)	RVR/CMV	MDA(H)	VIS
A	570 (554)	1000	570 (549)	1000	730 (709)	1600
B		1200		1200		2400
C		1600		1600		3200

MINIMA with Missed APCH climb gradient of 2.5% are not established.
Circling is not authorized during the night time, except clockwise circling to RWY16L/22/23/34R/34L.

CHANGE : New PROC

※日本語記載部分は原告代理人作成

(航空路誌参照番号)

RJTT AD2.24-IAC-36

AIP Japan
TOKYO INTL

INSTRUMENT APPROACH CHART

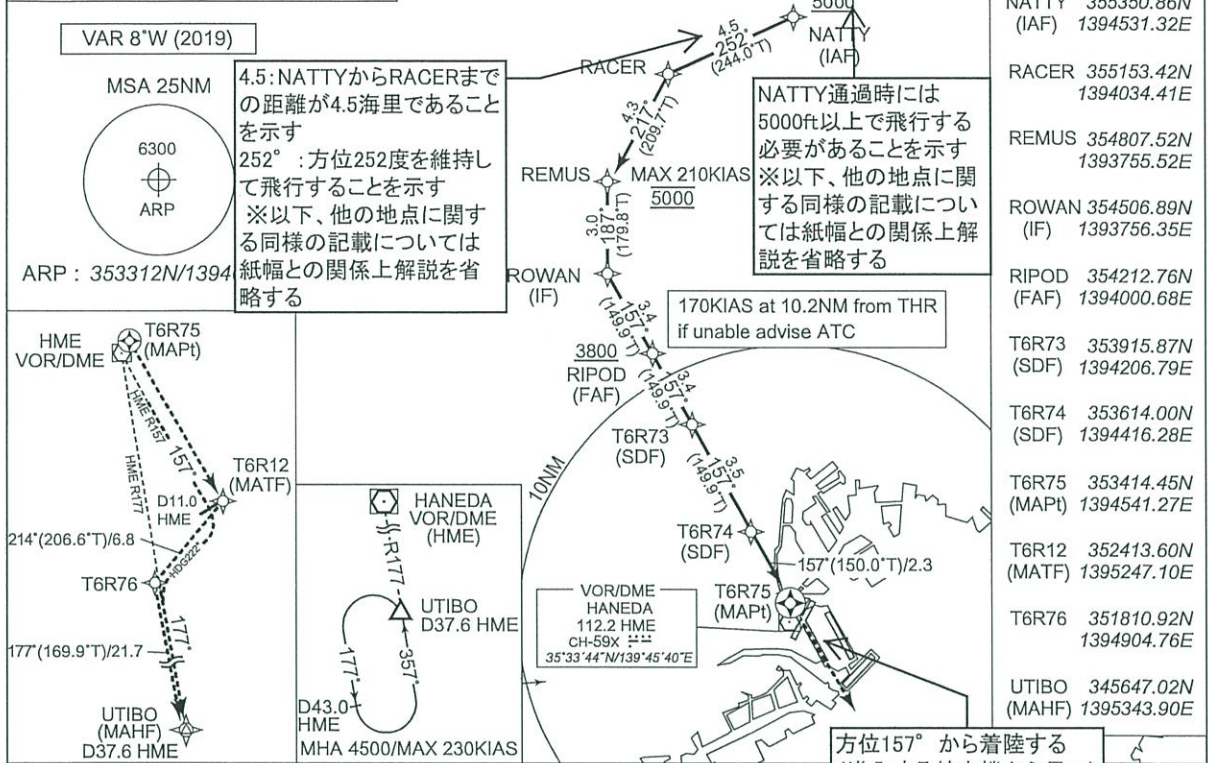
RJTT / TOKYO INTL

RNAV (GNSS) RWY16R

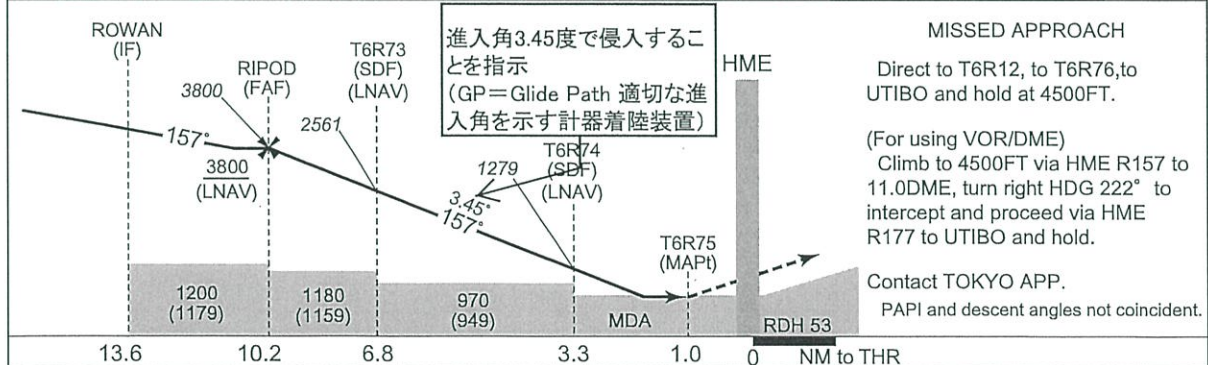
TOKYO APP 119.1 - 119.4 - 119.7 126.5 - 236.8 - 261.2	1 DME/DME not authorized. 2 RADAR service required. 3 GNSS required.	TOKYO TOWER 118.1 - 124.35 - 118.575 118.725 - 118.8	RADAR AVBL ATIS 128.8
---	--	--	--------------------------

Simultaneous approach authorized with RWY 16L(RNAV)

Baro-VNAV not authorized below -10°C



NM to Next FIX	FAF	9	8	7	6	5	4	3	
ALT (3.45° APCH Path)	3800	3734	3367	3001	2635	2268	1902	1536	



Missed APCH climb gradient MNM 5.0%

MINIMA		THR elev. 16		AD elev. 21		
CAT	LNAV/VNAV		LNAV		CIRCLING	
	DA(H)	RVR/CMV	MDA(H)	RVR/CMV	MDA(H)	VIS
	A	1000		1000		1600
	B	570 (554)	1200	570 (549)	1200	730 (709)
C	2400					
D	1600		1600		3200	

MINIMA with Missed APCH climb gradient of 2.5% are not established.
Circling is not authorized during the night time, except clockwise circling to RWY16L/22/23/34R/34L.

CHANGE : New PROC

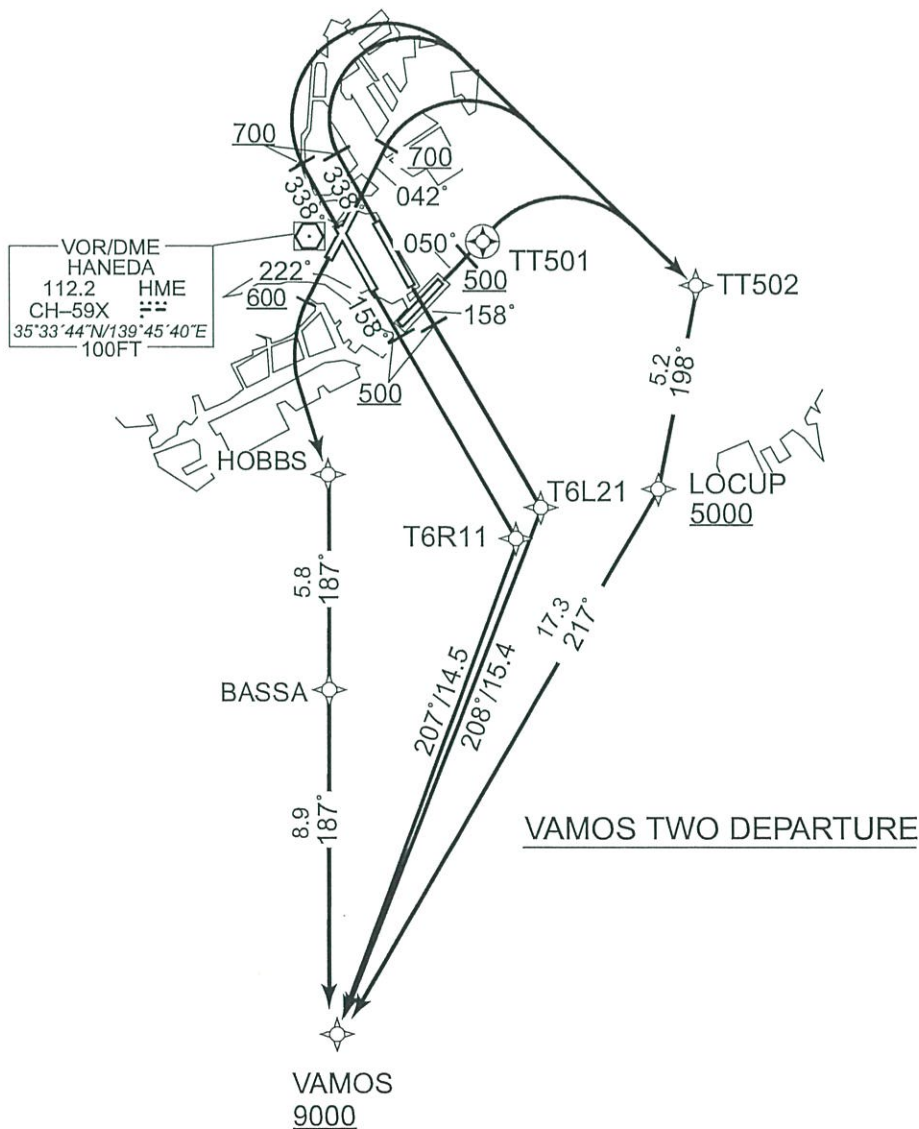
「変更点: 新しい方式(飛行経路)」

STANDARD DEPARTURE CHART-INSTRUMENT

RJTT/TOKYO INTL		RNAV SID	
VAMOS TWO DEPARTURE		RNAV1	
Note 1) DME/DME/IRU or GNSS required. ※The aircraft equipped with only DME/DME/IRU must be able to update its position without delay at the starting point of take-off rolling. 2) RADAR service required.		Critical DME	RWY16R:HME 1.2NM FM DER - 1.9NM to T6R11 RWY16L:HME 1.0NM FM DER - 2.4NM to T6L21 RWY34R:HME 1.0NM FM DER - 2.5NM to TT502 RWY34L:HME 0.5NM FM DER - 2.5NM to TT502 RWY04:HME 1.7NM FM DER - 2.5NM to TT502 RWY05:HME DER - 2.7NM to TT502
DME GAP	RWY16R:DER - 1.2NM FM DER RWY16L:DER - 1.0NM FM DER RWY34R:DER - 1.0NM FM DER RWY34L:DER - 0.5NM FM DER RWY04:DER - 1.7NM FM DER RWY22:DER - 1.4NM FM DER		
Inappropriate NavAids	See AD1.1.6.10.3.Inappropriate NAVAIDs for RNAV1		

VAR8°W(2019)

CHANGE : DME GAP for RWY22. RTE FM RWY22 established. PROC renamed.



STANDARD DEPARTURE CHART-INSTRUMENT

RJTT/TOKYO INTL

RNAV SID

VAMOS TWO DEPARTURE

RWY16R : Climb on HDG 158° at or above 500FT, direct to T6R11,
to VAMOS at or above 9000FT.

RWY16L : Climb on HDG 158° at or above 500FT, direct to T6L21,
to VAMOS at or above 9000FT.

RWY34L/34R : Climb on HDG 338° at or above 700FT, turn right direct to
TT502, to LOCUP at or above 5000FT, to VAMOS at or above
9000FT.

RWY04: Climb on HDG 042° at or above 700FT, turn right direct to TT502,
to LOCUP at or above 5000FT, to VAMOS at or above 9000FT.

RWY05: Climb on HDG 050° at or above 500FT, direct to TT501, turn right
direct to TT502, to LOCUP at or above 5000FT, to VAMOS at or
above 9000FT.

RWY22: Climb on HDG 222° at or above 600FT, turn left direct to HOBBS,
to BASSA, to VAMOS at or above 9000FT.

Note RWY34L/34R/04 : 5.0% climb gradient required up to 700FT.
RWY05 : 5.0% climb gradient required up to 500FT.
RWY22 : 5.0% climb gradient required up to 600FT.

CHANGE : RTE FM RWY22 established. PROC renamed. Editorial.

STANDARD DEPARTURE CHART-INSTRUMENT

RJTT/TOKYO INTL

RNAV SID

VAMOS TWO DEPARTURE

RWY16R

Serial Number	Path Descriptor	Waypoint Identifier	Fly Over	Course *M(*T)	Magnetic Variation	Distance (NM)	Turn Direction	Altitude (FT)	Speed (KIAS)	Vertical Angle	Navigation Specification
001	VA	-	-	158 (150.0)	-7.5	-	-	+500	-	-	RNAV1
002	DF	T6R11	-	-	-7.5	-	-	-	-	-	RNAV1
003	TF	VAMOS	-	207 (199.5)	-7.5	14.5	-	+9000	-	-	RNAV1

RWY16L

Serial Number	Path Descriptor	Waypoint Identifier	Fly Over	Course *M(*T)	Magnetic Variation	Distance (NM)	Turn Direction	Altitude (FT)	Speed (KIAS)	Vertical Angle	Navigation Specification
001	VA	-	-	158 (150.0)	-7.5	-	-	+500	-	-	RNAV1
002	DF	T6L21	-	-	-7.5	-	-	-	-	-	RNAV1
003	TF	VAMOS	-	208 (200.7)	-7.5	15.4	-	+9000	-	-	RNAV1

RWY34L/RWY34R

Serial Number	Path Descriptor	Waypoint Identifier	Fly Over	Course *M(*T)	Magnetic Variation	Distance (NM)	Turn Direction	Altitude (FT)	Speed (KIAS)	Vertical Angle	Navigation Specification
001	VA	-	-	338 (330.0)	-7.5	-	-	+700	-	-	RNAV1
002	DF	TT502	-	-	-7.5	-	R	-	-	-	RNAV1
003	TF	LOCUP	-	198 (190.9)	-7.5	5.2	-	+5000	-	-	RNAV1
004	TF	VAMOS	-	217 (209.5)	-7.5	17.3	-	+9000	-	-	RNAV1

RWY04

Serial Number	Path Descriptor	Waypoint Identifier	Fly Over	Course *M(*T)	Magnetic Variation	Distance (NM)	Turn Direction	Altitude (FT)	Speed (KIAS)	Vertical Angle	Navigation Specification
001	VA	-	-	042 (034.9)	-7.5	-	-	+700	-	-	RNAV1
002	DF	TT502	-	-	-7.5	-	R	-	-	-	RNAV1
003	TF	LOCUP	-	198 (190.9)	-7.5	5.2	-	+5000	-	-	RNAV1
004	TF	VAMOS	-	217 (209.5)	-7.5	17.3	-	+9000	-	-	RNAV1

CHANGE : PROC renamed. Editorial.

STANDARD DEPARTURE CHART-INSTRUMENT

RJTT/TOKYO INTL

RNAV SID

RWY05

Serial Number	Path Descriptor	Waypoint Identifier	Fly Over	Course *M(*T)	Magnetic Variation	Distance (NM)	Turn Direction	Altitude (FT)	Speed (KIAS)	Vertical Angle	Navigation Specification
001	VA	-	-	050 (042.4)	-7.5	-	-	+500	-	-	RNAV1
002	DF	TT501	Y	-	-7.5	-	-	-	-	-	RNAV1
003	DF	TT502	-	-	-7.5	-	R	-	-	-	RNAV1
004	TF	LOCUP	-	198 (190.9)	-7.5	5.2	-	+5000	-	-	RNAV1
005	TF	VAMOS	-	217 (209.5)	-7.5	17.3	-	+9000	-	-	RNAV1

RWY22

Serial Number	Path Descriptor	Waypoint Identifier	Fly Over	Course *M(*T)	Magnetic Variation	Distance (NM)	Turn Direction	Altitude (FT)	Speed (KIAS)	Vertical Angle	Navigation Specification
001	VA	-	-	222 (214.9)	-7.5	-	-	+600	-	-	RNAV1
002	DF	HOBBS	-	-	-7.5	-	L	-	-	-	RNAV1
003	TF	BASSA	-	187 (179.9)	-7.5	5.8	-	-	-	-	RNAV1
004	TF	VAMOS	-	187 (179.9)	-7.5	8.9	-	+9000	-	-	RNAV1

Waypoint Coordinates

Waypoint Identifier	Coordinates	Waypoint Identifier	Coordinates
BASSA	352108.8N / 1394542.2E	T6R11	352552.5N / 1395137.2E
HOBBS	352653.9N / 1394541.3E	TT501	353328.7N / 1395029.9E
LOCUP	352718.8N / 1395608.5E	TT502	353224.4N / 1395720.7E
T6L21	352639.1N / 1395222.0E	VAMOS	351215.5N / 1394543.6E

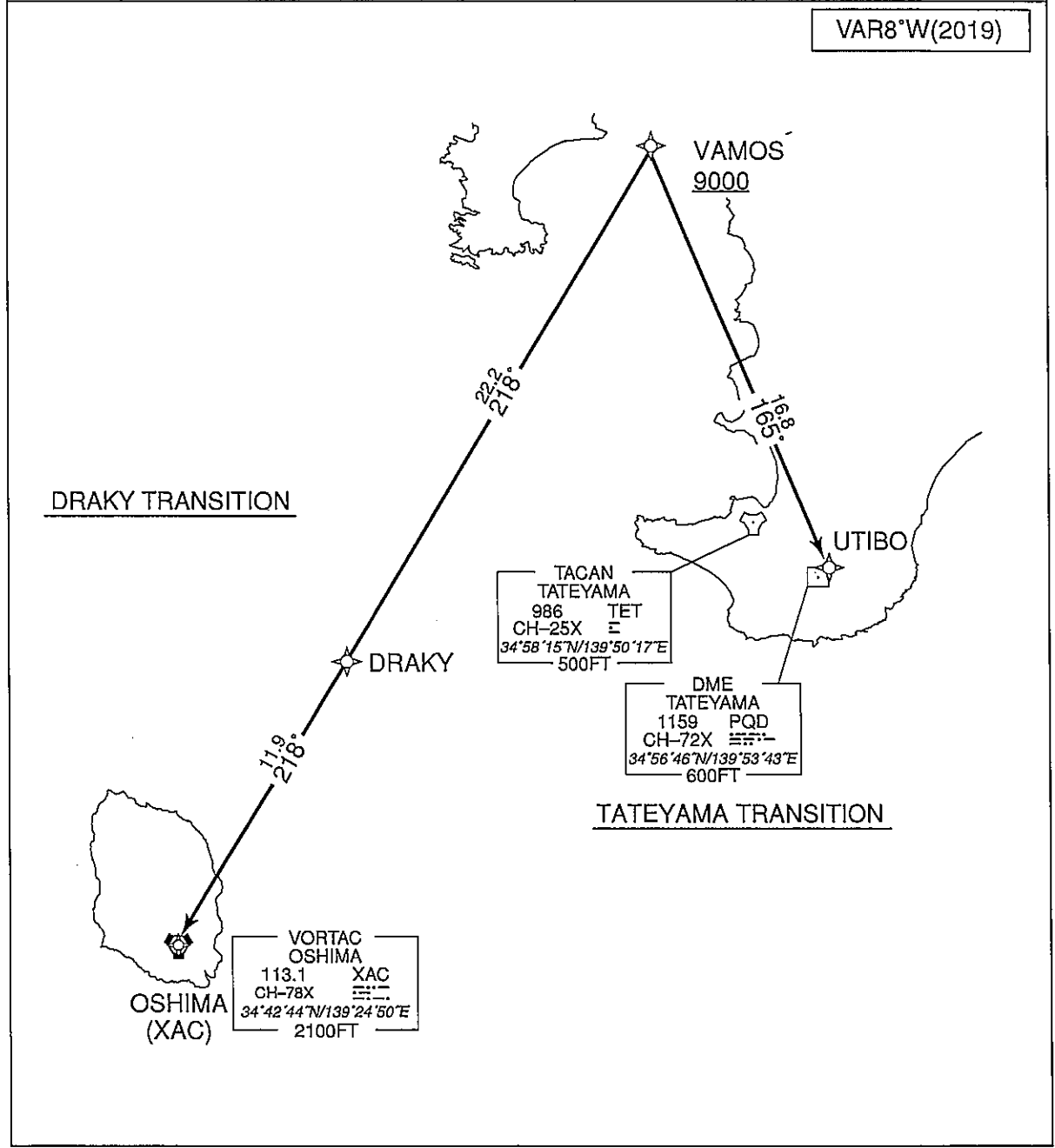
CHANGE : RTE FM RWY22 established. BASSA, HOBBS established.

STANDARD DEPARTURE CHART-INSTRUMENT

RJTT/TOKYO INTL RNAV TRANSITION

TATEYAMA TRANSITION / DRAKY TRANSITION		RNAV1
Note 1) DME/DME/IRU or GNSS required. 2) RADAR service required.		
DME GAP	-	Critical DME -
Inappropriate NavAids	See AD1.1.6.10.3. Inappropriate NAVAIDs for RNAV1	

VAR8°W(2019)



STANDARD DEPARTURE CHART-INSTRUMENT

RJTT/TOKYO INTL

RNAV TRANSITION

TATEYAMA TRANSITION

From VAMOS at or above 9000FT, to UTIBO.

Serial Number	Path Descriptor	Waypoint Identifier	Fly Over	Course °M(°T)	Magnetic Variation	Distance (NM)	Turn Direction	Altitude (FT)	Speed (KIAS)	Vertical Angle	Navigation Specification
001	IF	VAMOS	-	-	-7.5	-	-	+9000	-	-	RNAV1
002	TF	UTIBO	-	165 (157.0)	-7.5	16.8	-	-	-	-	RNAV1

DRAKY TRANSITION

From VAMOS at or above 9000FT, to DRAKY, to XAC.

Serial Number	Path Descriptor	Waypoint Identifier	Fly Over	Course °M(°T)	Magnetic Variation	Distance (NM)	Turn Direction	Altitude (FT)	Speed (KIAS)	Vertical Angle	Navigation Specification
001	IF	VAMOS	-	-	-7.5	-	-	+9000	-	-	RNAV1
002	TF	DRAKY	-	218 (210.2)	-7.5	22.2	-	-	-	-	RNAV1
003	TF	XAC	-	218 (210.1)	-7.5	11.9	-	-	-	-	RNAV1

Waypoint Coordinates

Waypoint Identifier	Coordinates	Waypoint Identifier	Coordinates
DRAKY	345301.7N / 1393205.5E	VAMOS	351215.5N / 1394543.6E
UTIBO	345647.0N / 1395343.9E	XAC	344244.1N / 1392450.5E

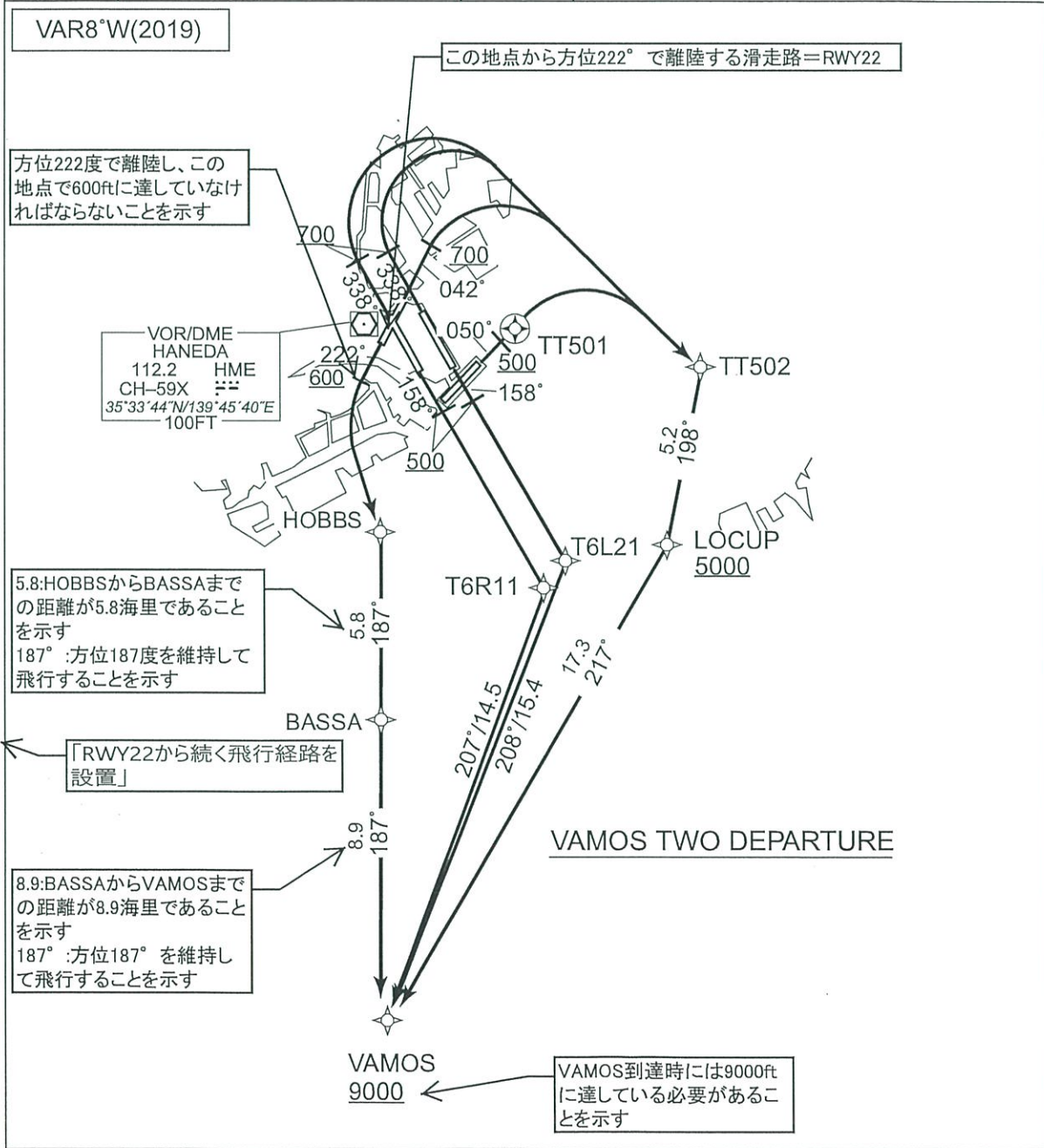
※日本語記載部分は原告代理人作成

AIP Japan
TOKYO INTL

STANDARD DEPARTURE CHART-INSTRUMENT

RJTT/TOKYO INTL RNAV SID

VAMOS TWO DEPARTURE		RNAV1
Note 1) DME/DME/IRU or GNSS required. ※The aircraft equipped with only DME/DME/IRU must be able to update its position without delay at the starting point of take-off rolling. 2) RADAR service required.		RWY16R:HME 1.2NM FM DER - 1.9NM to T6R11 RWY16L:HME 1.0NM FM DER - 2.4NM to T6L21 RWY34R:HME 1.0NM FM DER - 2.5NM to TT502 RWY34L:HME 0.5NM FM DER - 2.5NM to TT502 RWY04:HME 1.7NM FM DER - 2.5NM to TT502 RWY05:HME DER - 2.7NM to TT502
DME GAP	RWY16R:DER - 1.2NM FM DER RWY16L:DER - 1.0NM FM DER RWY34R:DER - 1.0NM FM DER RWY34L:DER - 0.5NM FM DER RWY04:DER - 1.7NM FM DER RWY22:DER - 1.4NM FM DER	
Inappropriate Nav aids	See AD1.1.6.10.3.Inappropriate NAVAIDs for RNAV1	



CHANGE : DME GAP for RWY22. RTE FM RWY22 established. PROC renamed.

STANDARD DEPARTURE CHART-INSTRUMENT

RJTT/TOKYO INTL

RNAV SID

VAMOS TWO DEPARTURE

RWY16R : Climb on HDG 158° at or above 500FT, direct to T6R11,
to VAMOS at or above 9000FT.

RWY16L : Climb on HDG 158° at or above 500FT, direct to T6L21,
to VAMOS at or above 9000FT.

RWY34L/34R : Climb on HDG 338° at or above 700FT, turn right direct to
TT502, to LOCUP at or above 5000FT, to VAMOS at or above
9000FT.

RWY04: Climb on HDG 042° at or above 700FT, turn right direct to TT502,
to LOCUP at or above 5000FT, to VAMOS at or above 9000FT.

RWY05: Climb on HDG 050° at or above 500FT, direct to TT501, turn right
direct to TT502, to LOCUP at or above 5000FT, to VAMOS at or
above 9000FT.

RWY22: Climb on HDG 222° at or above 600FT, turn left direct to HOBBS,
to BASSA, to VAMOS at or above 9000FT.

Note RWY34L/34R/04 : 5.0% climb gradient required up to 700FT.
RWY05 : 5.0% climb gradient required up to 500FT.
RWY22 : 5.0% climb gradient required up to 600FT.

RWY: 滑走路 (Runway)
22: 方位222度を1/10した数
字で示された、滑走路番号

針路(HDG=Heading)を222度にと
り、600ft以上へ上昇せよ。左旋回し、
直接、HOBBS地点とBASSA地点を経
由し、VAMOS地点を9000ft以上で飛
行せよ。

CHANGE : RTE FM RWY22 established. PROC renamed. Editorial.

STANDARD DEPARTURE CHART-INSTRUMENT

RJTT/TOKYO INTL

RNAV SID

VAMOS TWO DEPARTURE

RWY16R

Serial Number	Path Descriptor	Waypoint Identifier	Fly Over	Course *M(*T)	Magnetic Variation	Distance (NM)	Turn Direction	Altitude (FT)	Speed (KIAS)	Vertical Angle	Navigation Specification
001	VA	-	-	158 (150.0)	-7.5	-	-	+500	-	-	RNAV1
002	DF	T6R11	-	-	-7.5	-	-	-	-	-	RNAV1
003	TF	VAMOS	-	207 (199.5)	-7.5	14.5	-	+9000	-	-	RNAV1

RWY16L

Serial Number	Path Descriptor	Waypoint Identifier	Fly Over	Course *M(*T)	Magnetic Variation	Distance (NM)	Turn Direction	Altitude (FT)	Speed (KIAS)	Vertical Angle	Navigation Specification
001	VA	-	-	158 (150.0)	-7.5	-	-	+500	-	-	RNAV1
002	DF	T6L21	-	-	-7.5	-	-	-	-	-	RNAV1
003	TF	VAMOS	-	208 (200.7)	-7.5	15.4	-	+9000	-	-	RNAV1

RWY34L/RWY34R

Serial Number	Path Descriptor	Waypoint Identifier	Fly Over	Course *M(*T)	Magnetic Variation	Distance (NM)	Turn Direction	Altitude (FT)	Speed (KIAS)	Vertical Angle	Navigation Specification
001	VA	-	-	338 (330.0)	-7.5	-	-	+700	-	-	RNAV1
002	DF	TT502	-	-	-7.5	-	R	-	-	-	RNAV1
003	TF	LOCUP	-	198 (190.9)	-7.5	5.2	-	+5000	-	-	RNAV1
004	TF	VAMOS	-	217 (209.5)	-7.5	17.3	-	+9000	-	-	RNAV1

RWY04

Serial Number	Path Descriptor	Waypoint Identifier	Fly Over	Course *M(*T)	Magnetic Variation	Distance (NM)	Turn Direction	Altitude (FT)	Speed (KIAS)	Vertical Angle	Navigation Specification
001	VA	-	-	042 (034.9)	-7.5	-	-	+700	-	-	RNAV1
002	DF	TT502	-	-	-7.5	-	R	-	-	-	RNAV1
003	TF	LOCUP	-	198 (190.9)	-7.5	5.2	-	+5000	-	-	RNAV1
004	TF	VAMOS	-	217 (209.5)	-7.5	17.3	-	+9000	-	-	RNAV1

CHANGE : PROC renamed. Editorial.

STANDARD DEPARTURE CHART-INSTRUMENT

RJTT/TOKYO INTL

RNAV SID

RWY05

Serial Number	Path Descriptor	Waypoint Identifier	Fly Over	Course *M(T)	Magnetic Variation	Distance (NM)	Turn Direction	Altitude (FT)	Speed (KIAS)	Vertical Angle	Navigation Specification
001	VA	-	-	050 (042.4)	-7.5	-	-	+500	-	-	RNAV1
002	DF	TT501	Y	-	-7.5	-	-	-	-	-	RNAV1
003	DF	TT502	-	-	-7.5	-	R	-	-	-	RNAV1
004	TF	LOCUP	-	198 (190.9)	-7.5	5.2	-	+5000	-	-	RNAV1
005	TF	VAMOS	-	217 (209.5)	-7.5	17.3	-	+9000	-	-	RNAV1

RWY22

Serial Number	Path Descriptor	Waypoint Identifier	Fly Over	Course *M(T)	Magnetic Variation	Distance (NM)	Turn Direction	Altitude (FT)	Speed (KIAS)	Vertical Angle	Navigation Specification
001	VA	-	-	222 (214.9)	-7.5	-	-	+600	-	-	RNAV1
002	DF	HOBBS	-	-	-7.5	-	L	-	-	-	RNAV1
003	TF	BASSA	-	187 (179.9)	-7.5	5.8	-	-	-	-	RNAV1
004	TF	VAMOS	-	187 (179.9)	-7.5	8.9	-	+9000	-	-	RNAV1

Waypoint Coordinates

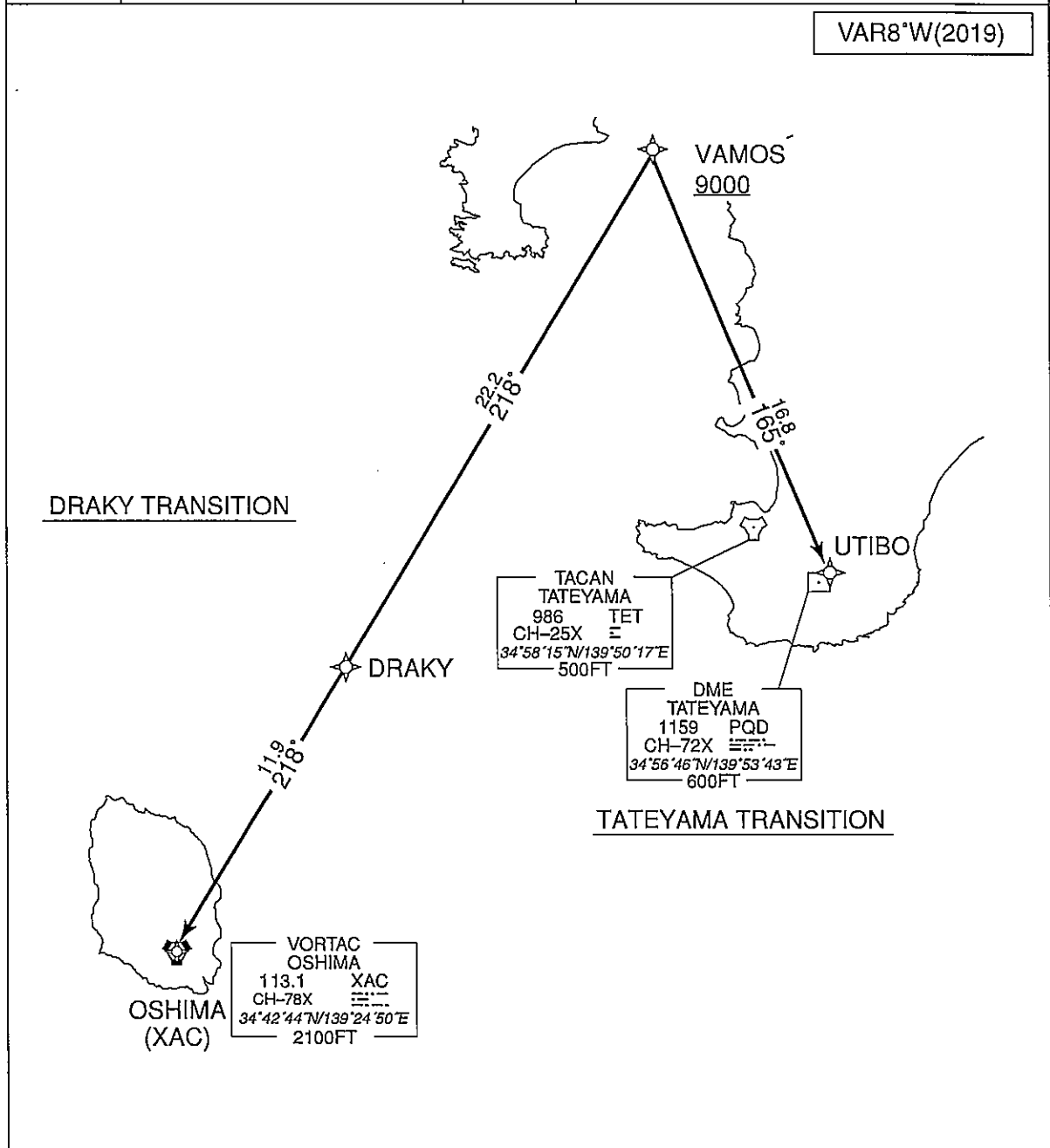
Waypoint Identifier	Coordinates	Waypoint Identifier	Coordinates
BASSA	352108.8N / 1394542.2E	T6R11	352552.5N / 1395137.2E
HOBBS	352653.9N / 1394541.3E	TT501	353328.7N / 1395029.9E
LOCUP	352718.8N / 1395608.5E	TT502	353224.4N / 1395720.7E
T6L21	352639.1N / 1395222.0E	VAMOS	351215.5N / 1394543.6E

CHANGE : RTE FM RWY22 established. BASSA, HOBBS established.

STANDARD DEPARTURE CHART-INSTRUMENT

RJTT/TOKYO INTL RNAV TRANSITION

TATEYAMA TRANSITION / DRAKY TRANSITION		RNAV1
Note 1) DME/DME/IRU or GNSS required. 2) RADAR service required.		
DME GAP	-	-
Inappropriate Nav aids	See AD1.1.6.10.3. Inappropriate NAVAIDs for RNAV1	



STANDARD DEPARTURE CHART-INSTRUMENT

RJTT/TOKYO INTL

RNAV TRANSITION

TATEYAMA TRANSITION

From VAMOS at or above 9000FT, to UTIBO.

Serial Number	Path Descriptor	Waypoint Identifier	Fly Over	Course *M(*T)	Magnetic Variation	Distance (NM)	Turn Direction	Altitude (FT)	Speed (KIAS)	Vertical Angle	Navigation Specification
001	IF	VAMOS	-	-	-7.5	-	-	+9000	-	-	RNAV1
002	TF	UTIBO	-	165 (157.0)	-7.5	16.8	-	-	-	-	RNAV1

DRAKY TRANSITION

From VAMOS at or above 9000FT, to DRAKY, to XAC.

Serial Number	Path Descriptor	Waypoint Identifier	Fly Over	Course *M(*T)	Magnetic Variation	Distance (NM)	Turn Direction	Altitude (FT)	Speed (KIAS)	Vertical Angle	Navigation Specification
001	IF	VAMOS	-	-	-7.5	-	-	+9000	-	-	RNAV1
002	TF	DRAKY	-	218 (210.2)	-7.5	22.2	-	-	-	-	RNAV1
003	TF	XAC	-	218 (210.1)	-7.5	11.9	-	-	-	-	RNAV1

Waypoint Coordinates

Waypoint Identifier	Coordinates	Waypoint Identifier	Coordinates
DRAKY	345301.7N / 1393205.5E	VAMOS	351215.5N / 1394543.6E
UTIBO	345647.0N / 1395343.9E	XAC	344244.1N / 1392450.5E

STANDARD DEPARTURE CHART-INSTRUMENT

RJTT/TOKYO INTL

RNAV SID

LAXAS TWO DEPARTURE

RNAV1

Note 1) DME/DME/IRU or GNSS required.
※The aircraft equipped with only DME/DME/IRU must be able to update its position without delay at the starting point of take-off rolling.
2) RADAR service required.

DME GAP
RWY16R:DER - 1.2NM FM DER
RWY16L:DER - 1.0NM FM DER
RWY34R:DER - 1.0NM FM DER
RWY34L:DER - 0.5NM FM DER
RWY04:DER - 1.7NM FM DER
RWY22:DER - 1.4NM FM DER

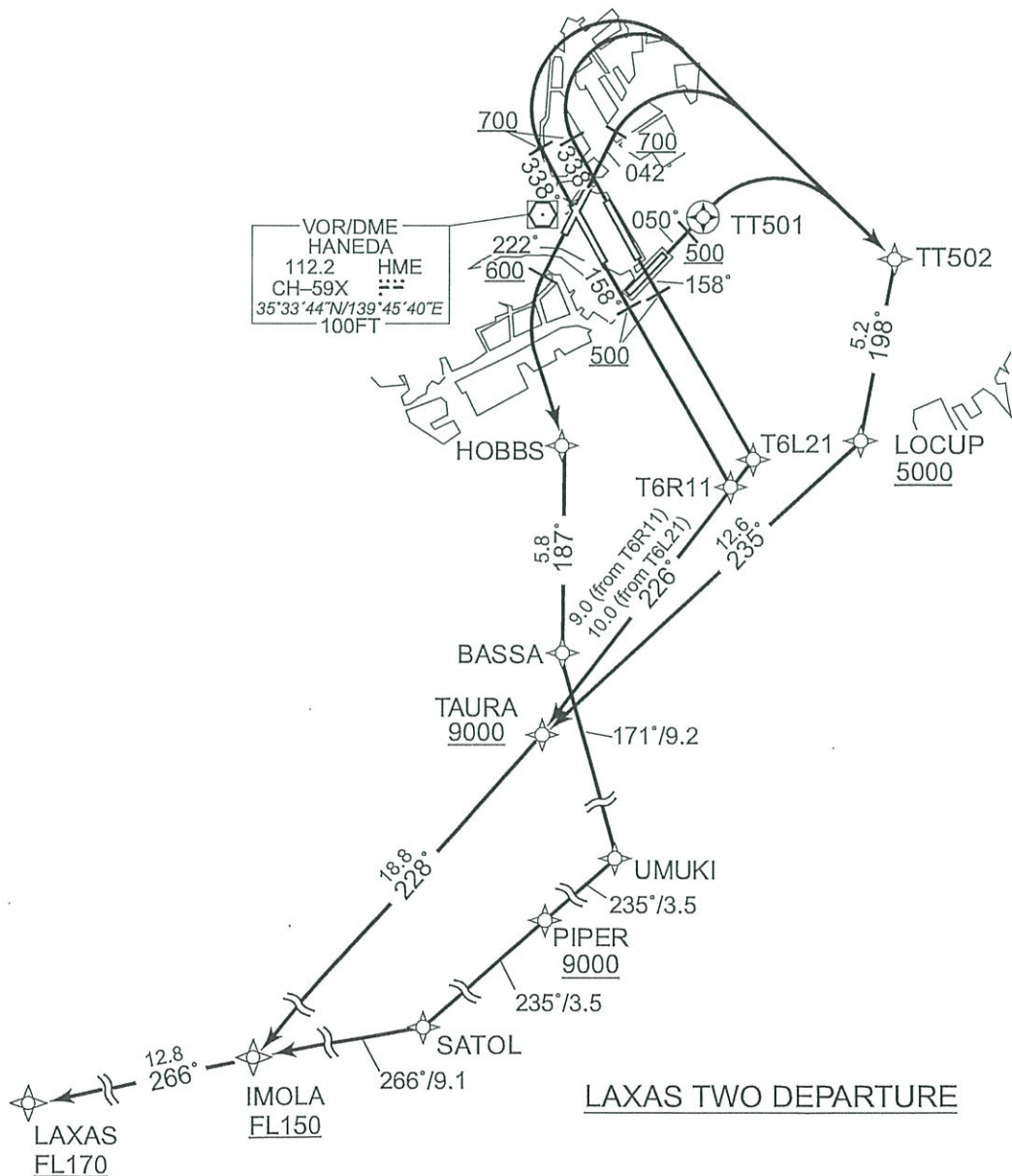
Critical DME

RWY16R: HME 1.2NM FM DER - 1.9NM to T6R11
HYD T6R11 - TAURA
RWY16L: HME 1.0NM FM DER - 2.4NM to T6L21
HYD 9.0NM to TAURA - TAURA
RWY34R: HME 1.0NM FM DER - 2.5NM to TT502
HYD 8.6NM to TAURA - TAURA
RWY34L: HME 0.5NM FM DER - 2.5NM to TT502
HYD 8.6NM to TAURA - TAURA
RWY04: HME 1.7NM FM DER - 2.5NM to TT502
HYD 8.6NM to TAURA - TAURA
RWY05: HME DER - 2.7NM to TT502
HYD 8.6NM to TAURA - TAURA

Inappropriate Nav aids
See AD1.1.6.10.3.Inappropriate NAVAIDs for RNAV1

VAR8°W(2019)

CHANGE : DME GAP for RWY22. RTE FM RWY22 established. PROC renamed.



STANDARD DEPARTURE CHART-INSTRUMENT

RJTT/TOKYO INTL

RNAV SID

LAXAS TWO DEPARTURE

RWY16R : Climb on HDG 158° at or above 500FT, direct to T6R11,
to TAURA at or above 9000FT, to IMOLA at or above FL150,
to LAXAS at or above FL170.

RWY16L : Climb on HDG 158° at or above 500FT, direct to T6L21,
to TAURA at or above 9000FT, to IMOLA at or above FL150,
to LAXAS at or above FL170.

RWY34L/34R : Climb on HDG 338° at or above 700FT, turn right direct to
TT502, to LOCUP at or above 5000FT, to TAURA at or above
9000FT, to IMOLA at or above FL150, to LAXAS at or above
FL170.

RWY04 : Climb on HDG 042° at or above 700FT, turn right direct to TT502,
to LOCUP at or above 5000FT, to TAURA at or above 9000FT,
to IMOLA at or above FL150, to LAXAS at or above FL170.

RWY05 : Climb on HDG 050° at or above 500FT, direct to TT501, turn right
direct to TT502, to LOCUP at or above 5000FT, to TAURA at or
above 9000FT, to IMOLA at or above FL150, to LAXAS at or above
FL170.

RWY22 : Climb on HDG 222° at or above 600FT, turn left direct to HOBBS,
to BASSA, to UMUKI, to PIPER at or above 9000FT, to SATOL,
to IMOLA at or above FL150, to LAXAS at or above FL170.

Note RWY34L/34R/04 : 5.0% climb gradient required up to 700FT.
RWY05 : 5.0% climb gradient required up to 500FT.
RWY22 : 5.0% climb gradient required up to 600FT.

CHANGE : RTE FM RWY22 established. PROC renamed.

STANDARD DEPARTURE CHART-INSTRUMENT

RJTT/TOKYO INTL

RNAV SID

LAXAS TWO DEPARTURE

RWY16R

Serial Number	Path Descriptor	Waypoint Identifier	Fly Over	Course *M(*T)	Magnetic Variation	Distance (NM)	Turn Direction	Altitude (FT)	Speed (KIAS)	Vertical Angle	Navigation Specification
001	VA	-	-	158 (150.0)	-7.5	-	-	+500	-	-	RNAV1
002	DF	T6R11	-	-	-7.5	-	-	-	-	-	RNAV1
003	TF	TAURA	-	226 (218.1)	-7.5	9.0	-	+9000	-	-	RNAV1
004	TF	IMOLA	-	228 (220.5)	-7.5	18.8	-	+FL150	-	-	RNAV1
005	TF	LAXAS	-	266 (258.6)	-7.5	12.8	-	+FL170	-	-	RNAV1

RWY16L

Serial Number	Path Descriptor	Waypoint Identifier	Fly Over	Course *M(*T)	Magnetic Variation	Distance (NM)	Turn Direction	Altitude (FT)	Speed (KIAS)	Vertical Angle	Navigation Specification
001	VA	-	-	158 (150.0)	-7.5	-	-	+500	-	-	RNAV1
002	DF	T6L21	-	-	-7.5	-	-	-	-	-	RNAV1
003	TF	TAURA	-	226 (218.1)	-7.5	10.0	-	+9000	-	-	RNAV1
004	TF	IMOLA	-	228 (220.5)	-7.5	18.8	-	+FL150	-	-	RNAV1
005	TF	LAXAS	-	266 (258.6)	-7.5	12.8	-	+FL170	-	-	RNAV1

RWY34L/RWY34R

Serial Number	Path Descriptor	Waypoint Identifier	Fly Over	Course *M(*T)	Magnetic Variation	Distance (NM)	Turn Direction	Altitude (FT)	Speed (KIAS)	Vertical Angle	Navigation Specification
001	VA	-	-	338 (330.0)	-7.5	-	-	+700	-	-	RNAV1
002	DF	TT502	-	-	-7.5	-	R	-	-	-	RNAV1
003	TF	LOCUP	-	198 (190.9)	-7.5	5.2	-	+5000	-	-	RNAV1
004	TF	TAURA	-	235 (227.3)	-7.5	12.6	-	+9000	-	-	RNAV1
005	TF	IMOLA	-	228 (220.5)	-7.5	18.8	-	+FL150	-	-	RNAV1
006	TF	LAXAS	-	266 (258.6)	-7.5	12.8	-	+FL170	-	-	RNAV1

CHANGE : PROC renamed

STANDARD DEPARTURE CHART-INSTRUMENT

RJTT/TOKYO INTL

RNAV SID

RWY04

Serial Number	Path Descriptor	Waypoint Identifier	Fly Over	Course *M('T)	Magnetic Variation	Distance (NM)	Turn Direction	Altitude (FT)	Speed (KIAS)	Vertical Angle	Navigation Specification
001	VA	-	-	042 (034.9)	-7.5	-	-	+700	-	-	RNAV1
002	DF	TT502	-	-	-7.5	-	R	-	-	-	RNAV1
003	TF	LOCUP	-	198 (190.9)	-7.5	5.2	-	+5000	-	-	RNAV1
004	TF	TAURA	-	235 (227.3)	-7.5	12.6	-	+9000	-	-	RNAV1
005	TF	IMOLA	-	228 (220.5)	-7.5	18.8	-	+FL150	-	-	RNAV1
006	TF	LAXAS	-	266 (258.6)	-7.5	12.8	-	+FL170	-	-	RNAV1

RWY05

Serial Number	Path Descriptor	Waypoint Identifier	Fly Over	Course *M('T)	Magnetic Variation	Distance (NM)	Turn Direction	Altitude (FT)	Speed (KIAS)	Vertical Angle	Navigation Specification
001	VA	-	-	050 (042.4)	-7.5	-	-	+500	-	-	RNAV1
002	DF	TT501	Y	-	-7.5	-	-	-	-	-	RNAV1
003	DF	TT502	-	-	-7.5	-	R	-	-	-	RNAV1
004	TF	LOCUP	-	198 (190.9)	-7.5	5.2	-	+5000	-	-	RNAV1
005	TF	TAURA	-	235 (227.3)	-7.5	12.6	-	+9000	-	-	RNAV1
006	TF	IMOLA	-	228 (220.5)	-7.5	18.8	-	+FL150	-	-	RNAV1
007	TF	LAXAS	-	266 (258.6)	-7.5	12.8	-	+FL170	-	-	RNAV1

STANDARD DEPARTURE CHART-INSTRUMENT

RJTT/TOKYO INTL

RNAV SID

RWY22

Serial Number	Path Descriptor	Waypoint Identifier	Fly Over	Course 'M'(T)	Magnetic Variation	Distance (NM)	Turn Direction	Altitude (FT)	Speed (KIAS)	Vertical Angle	Navigation Specification
001	VA	-	-	222 (214.9)	-7.5	-	-	+600	-	-	RNAV1
002	DF	HOBBS	-	-	-7.5	-	L	-	-	-	RNAV1
003	TF	BASSA	-	187 (179.9)	-7.5	5.8	-	-	-	-	RNAV1
004	TF	UMUKI	-	171 (163.9)	-7.5	9.2	-	-	-	-	RNAV1
005	TF	PIPER	-	235 (227.4)	-7.5	3.5	-	+9000	-	-	RNAV1
006	TF	SATOL	-	235 (227.4)	-7.5	5.5	-	-	-	-	RNAV1
007	TF	IMOLA	-	266 (258.7)	-7.5	9.1	-	+FL150	-	-	RNAV1
008	TF	LAXAS	-	266 (258.6)	-7.5	12.8	-	+FL170	-	-	RNAV1

Waypoint Coordinates

Waypoint Identifier	Coordinates	Waypoint Identifier	Coordinates
BASSA	352108.8N / 1394542.2E	T6L21	352639.1N / 1395222.0E
HOBBS	352653.9N / 1394541.3E	T6R11	352552.5N / 1395137.2E
IMOLA	350426.0N / 1392951.0E	TAURA	351846.1N / 1394447.3E
LAXAS	350153.1N / 1391432.8E	TT501	353328.7N / 1395029.9E
LOCUP	352718.8N / 1395608.5E	TT502	353224.4N / 1395720.7E
PIPER	350958.3N / 1394542.0E	UMUKI	351219.1N / 1394849.2E
SATOL	350613.3N / 1394043.4E		

CHANGE : RTE FM RWY22 established. BASSA, HOBBS, PIPER, SATOL, UMUKI established.

※日本語記載部分は原告代理人作成

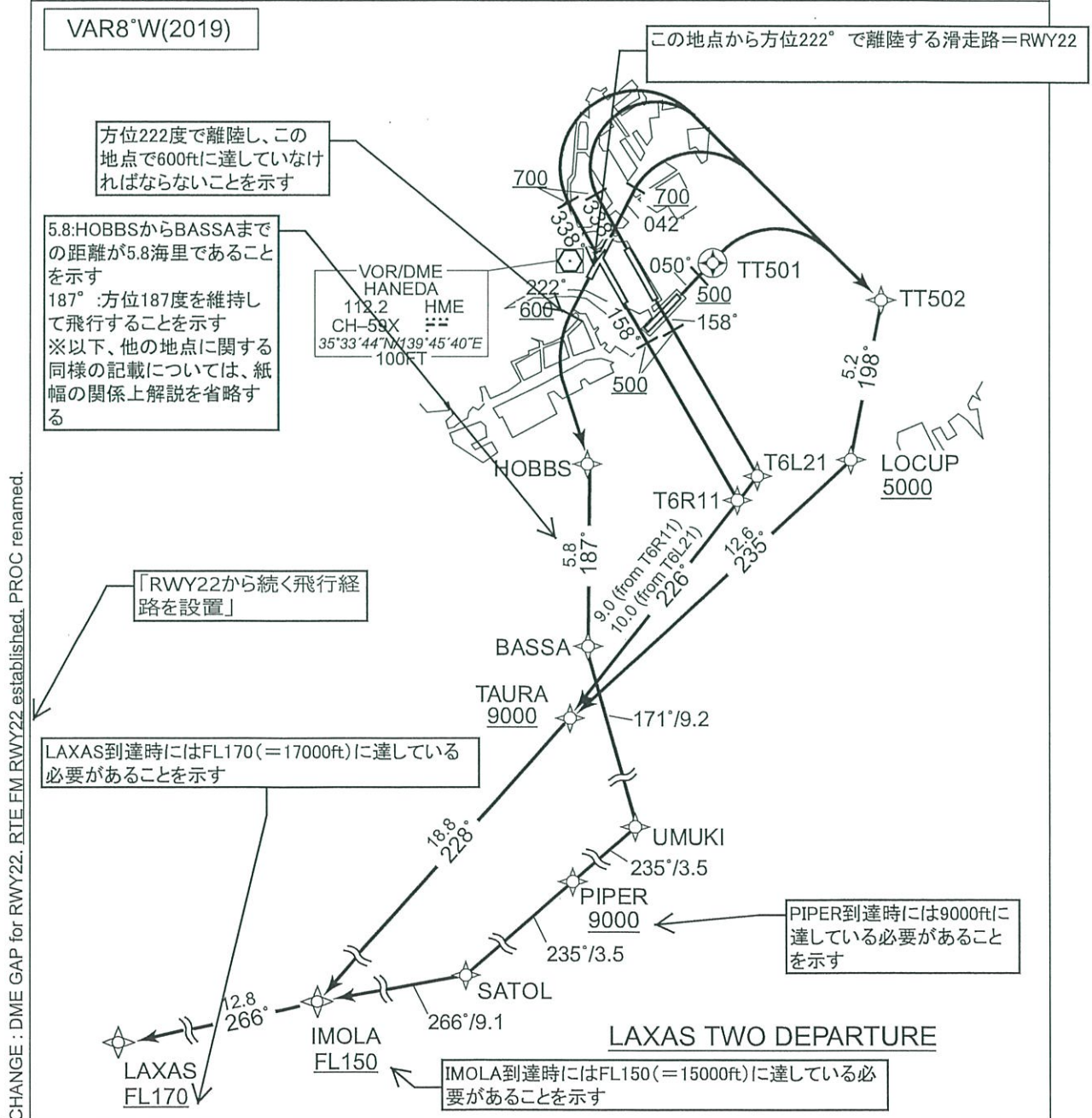
(航空路誌参照番号)

AIP Japan
TOKYO INTL

RJTT AD2.24-SID-17

STANDARD DEPARTURE CHART-INSTRUMENT

RJTT/TOKYO INTL		RNAV SID	
LAXAS TWO DEPARTURE		RNAV1	
Note 1) DME/DME/IRU or GNSS required. ※The aircraft equipped with only DME/DME/IRU must be able to update its position without delay at the starting point of take-off rolling. 2) RADAR service required.		RWY16R: HME 1.2NM FM DER - 1.9NM to T6R11 HYD T6R11 - TAURA RWY16L: HME 1.0NM FM DER - 2.4NM to T6L21 HYD 9.0NM to TAURA - TAURA RWY34R: HME 1.0NM FM DER - 2.5NM to TT502 HYD 8.6NM to TAURA - TAURA RWY34L: HME 0.5NM FM DER - 2.5NM to TT502 HYD 8.6NM to TAURA - TAURA RWY04: HME 1.7NM FM DER - 2.5NM to TT502 HYD 8.6NM to TAURA - TAURA RWY05: HME DER - 2.7NM to TT502 HYD 8.6NM to TAURA - TAURA	
DME GAP	RWY16R:DER - 1.2NM FM DER RWY16L:DER - 1.0NM FM DER RWY34R:DER - 1.0NM FM DER RWY34L:DER - 0.5NM FM DER RWY04:DER - 1.7NM FM DER RWY22:DER - 1.4NM FM DER	Critical DME	
Inappropriate Navaids	See AD1.1.6.10.3.Inappropriate NAVAIDs for RNAV1		



STANDARD DEPARTURE CHART-INSTRUMENT

RJTT/TOKYO INTL

RNAV SID

LAXAS TWO DEPARTURE

RWY16R : Climb on HDG 158° at or above 500FT, direct to T6R11, to TAURA at or above 9000FT, to IMOLA at or above FL150, to LAXAS at or above FL170.

RWY16L : Climb on HDG 158° at or above 500FT, direct to T6L21, to TAURA at or above 9000FT, to IMOLA at or above FL150, to LAXAS at or above FL170.

RWY34L/34R : Climb on HDG 338° at or above 700FT, turn right direct to TT502, to LOCUP at or above 5000FT, to TAURA at or above 9000FT, to IMOLA at or above FL150, to LAXAS at or above FL170.

RWY04 : Climb on HDG 042° at or above 700FT, turn right direct to TT502, to LOCUP at or above 5000FT, to TAURA at or above 9000FT, to IMOLA at or above FL150, to LAXAS at or above FL170.

RWY05 : Climb on HDG 050° at or above 500FT, direct to TT501, turn right direct to TT502, to LOCUP at or above 5000FT, to TAURA at or above 9000FT, to IMOLA at or above FL150, to LAXAS at or above FL170.

RWY22 : Climb on HDG 222° at or above 600FT, turn left direct to HOBBS, to BASSA, to UMUKI, to PIPER at or above 9000FT, to SATOL, to IMOLA at or above FL150, to LAXAS at or above FL170.

Note RWY34L/34R/04 : 5.0% climb gradient required up to 700FT.
RWY05 : 5.0% climb gradient required up to 500FT.
RWY22 : 5.0% climb gradient required up to 600FT.

RWY: 滑走路 (Runway) 22:
方位222度を1/10した数字
で示された、滑走路番号

針路 (HDG=Heading) を222度にとり、600ft以上へ上昇せよ。左旋回し、直接、HOBBS地点、BASSA地点、UMUKI地点を經由し、PIPER地点を9000ft以上で飛行せよ。SATOLを經由し、IMOLA地点をFL150 (15000ft) 以上で飛行せよ。LAXAS地点をFL170 (17000ft) 以上で飛行せよ。

CHANGE : RTE FM RWY22 established. PROC renamed.

STANDARD DEPARTURE CHART-INSTRUMENT

RJTT/TOKYO INTL

RNAV SID

LAXAS TWO DEPARTURE

RWY16R

Serial Number	Path Descriptor	Waypoint Identifier	Fly Over	Course *M(*T)	Magnetic Variation	Distance (NM)	Turn Direction	Altitude (FT)	Speed (KIAS)	Vertical Angle	Navigation Specification
001	VA	-	-	158 (150.0)	-7.5	-	-	+500	-	-	RNAV1
002	DF	T6R11	-	-	-7.5	-	-	-	-	-	RNAV1
003	TF	TAURA	-	226 (218.1)	-7.5	9.0	-	+9000	-	-	RNAV1
004	TF	IMOLA	-	228 (220.5)	-7.5	18.8	-	+FL150	-	-	RNAV1
005	TF	LAXAS	-	266 (258.6)	-7.5	12.8	-	+FL170	-	-	RNAV1

RWY16L

Serial Number	Path Descriptor	Waypoint Identifier	Fly Over	Course *M(*T)	Magnetic Variation	Distance (NM)	Turn Direction	Altitude (FT)	Speed (KIAS)	Vertical Angle	Navigation Specification
001	VA	-	-	158 (150.0)	-7.5	-	-	+500	-	-	RNAV1
002	DF	T6L21	-	-	-7.5	-	-	-	-	-	RNAV1
003	TF	TAURA	-	226 (218.1)	-7.5	10.0	-	+9000	-	-	RNAV1
004	TF	IMOLA	-	228 (220.5)	-7.5	18.8	-	+FL150	-	-	RNAV1
005	TF	LAXAS	-	266 (258.6)	-7.5	12.8	-	+FL170	-	-	RNAV1

RWY34L/RWY34R

Serial Number	Path Descriptor	Waypoint Identifier	Fly Over	Course *M(*T)	Magnetic Variation	Distance (NM)	Turn Direction	Altitude (FT)	Speed (KIAS)	Vertical Angle	Navigation Specification
001	VA	-	-	338 (330.0)	-7.5	-	-	+700	-	-	RNAV1
002	DF	TT502	-	-	-7.5	-	R	-	-	-	RNAV1
003	TF	LOCUP	-	198 (190.9)	-7.5	5.2	-	+5000	-	-	RNAV1
004	TF	TAURA	-	235 (227.3)	-7.5	12.6	-	+9000	-	-	RNAV1
005	TF	IMOLA	-	228 (220.5)	-7.5	18.8	-	+FL150	-	-	RNAV1
006	TF	LAXAS	-	266 (258.6)	-7.5	12.8	-	+FL170	-	-	RNAV1

CHANGE : PROC renamed

STANDARD DEPARTURE CHART-INSTRUMENT

RJTT/TOKYO INTL

RNAV SID

RWY04

Serial Number	Path Descriptor	Waypoint Identifier	Fly Over	Course *M(*T)	Magnetic Variation	Distance (NM)	Turn Direction	Altitude (FT)	Speed (KIAS)	Vertical Angle	Navigation Specification
001	VA	-	-	042 (034.9)	-7.5	-	-	+700	-	-	RNAV1
002	DF	TT502	-	-	-7.5	-	R	-	-	-	RNAV1
003	TF	LOCUP	-	198 (190.9)	-7.5	5.2	-	+5000	-	-	RNAV1
004	TF	TAURA	-	235 (227.3)	-7.5	12.6	-	+9000	-	-	RNAV1
005	TF	IMOLA	-	228 (220.5)	-7.5	18.8	-	+FL150	-	-	RNAV1
006	TF	LAXAS	-	266 (258.6)	-7.5	12.8	-	+FL170	-	-	RNAV1

RWY05

Serial Number	Path Descriptor	Waypoint Identifier	Fly Over	Course *M(*T)	Magnetic Variation	Distance (NM)	Turn Direction	Altitude (FT)	Speed (KIAS)	Vertical Angle	Navigation Specification
001	VA	-	-	050 (042.4)	-7.5	-	-	+500	-	-	RNAV1
002	DF	TT501	Y	-	-7.5	-	-	-	-	-	RNAV1
003	DF	TT502	-	-	-7.5	-	R	-	-	-	RNAV1
004	TF	LOCUP	-	198 (190.9)	-7.5	5.2	-	+5000	-	-	RNAV1
005	TF	TAURA	-	235 (227.3)	-7.5	12.6	-	+9000	-	-	RNAV1
006	TF	IMOLA	-	228 (220.5)	-7.5	18.8	-	+FL150	-	-	RNAV1
007	TF	LAXAS	-	266 (258.6)	-7.5	12.8	-	+FL170	-	-	RNAV1

STANDARD DEPARTURE CHART-INSTRUMENT

RJTT/TOKYO INTL

RNAV SID

RWY22

Serial Number	Path Descriptor	Waypoint Identifier	Fly Over	Course *M(T)	Magnetic Variation	Distance (NM)	Turn Direction	Altitude (FT)	Speed (KIAS)	Vertical Angle	Navigation Specification
001	VA	--	--	222 (214.9)	-7.5	--	--	+600	--	--	RNAV1
002	DF	HOBBS	--	--	-7.5	--	L	--	--	--	RNAV1
003	TF	BASSA	--	187 (179.9)	-7.5	5.8	--	--	--	--	RNAV1
004	TF	UMUKI	--	171 (163.9)	-7.5	9.2	--	--	--	--	RNAV1
005	TF	PIPER	--	235 (227.4)	-7.5	3.5	--	+9000	--	--	RNAV1
006	TF	SATOL	--	235 (227.4)	-7.5	5.5	--	--	--	--	RNAV1
007	TF	IMOLA	--	266 (258.7)	-7.5	9.1	--	+FL150	--	--	RNAV1
008	TF	LAXAS	--	266 (258.6)	-7.5	12.8	--	+FL170	--	--	RNAV1

Waypoint Coordinates

Waypoint Identifier	Coordinates	Waypoint Identifier	Coordinates
BASSA	352108.8N / 1394542.2E	T6L21	352639.1N / 1395222.0E
HOBBS	352653.9N / 1394541.3E	T6R11	352552.5N / 1395137.2E
IMOLA	350426.0N / 1392951.0E	TAURA	351846.1N / 1394447.3E
LAXAS	350153.1N / 1391432.8E	TT501	353328.7N / 1395029.9E
LOCUP	352718.8N / 1395608.5E	TT502	353224.4N / 1395720.7E
PIPER	350958.3N / 1394542.0E	UMUKI	351219.1N / 1394849.2E
SATOL	350613.3N / 1394043.4E		

CHANGE : RTE FM RWY22 established. BASSA, HOBBS, PIPER, SATOL, UMUKI established.

STANDARD DEPARTURE CHART-INSTRUMENT

RJTT/TOKYO INTL

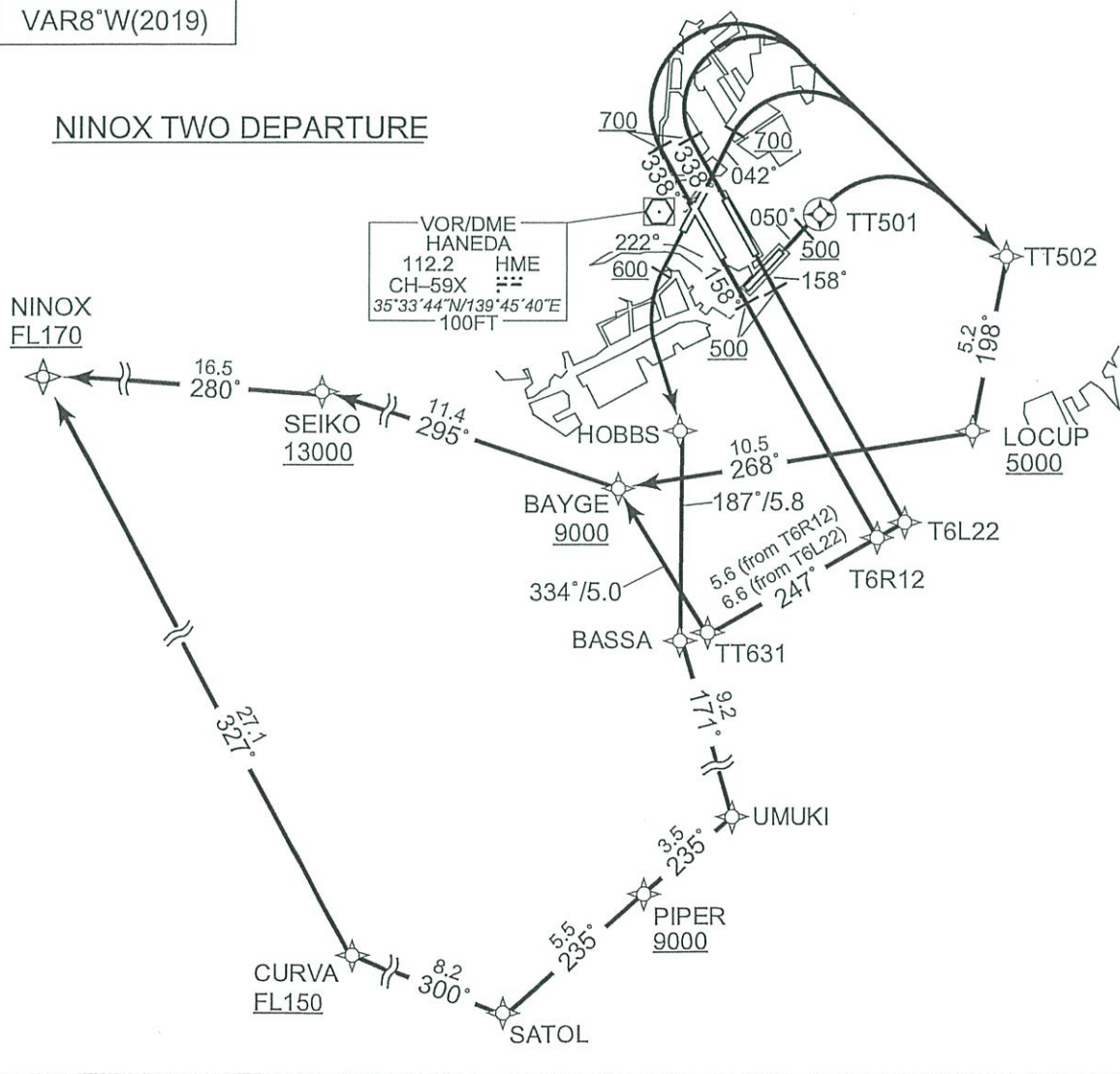
RNAV SID

NINOX TWO DEPARTURE		RNAV1
<p>Note 1) DME/DME/IRU or GNSS required. ※The aircraft equipped with only DME/DME/IRU must be able to update its position without delay at the starting point of take-off rolling. 2) RADAR service required.</p>		<p>RWY16R : HME 1.2NM FM DER - 3.8NM to T6R12 HYD T6R12 - TT631 PQD 1.0NM to BAYGE - 6.5NM to SEIKO</p> <p>RWY16L : HME 1.0NM FM DER - 4.7NM to T6L22 HYD 5.6NM to TT631 - TT631 PQD 1.0NM to BAYGE - 6.5NM to SEIKO</p> <p>RWY34R : HME 1.0NM FM DER - 2.5NM to TT502 HYD 6.5NM to BAYGE - BAYGE PQD BAYGE - 6.5NM to SEIKO</p> <p>RWY34L : HME 0.5NM FM DER - 2.5NM to TT502 HYD 6.5NM to BAYGE - BAYGE PQD BAYGE - 6.5NM to SEIKO</p> <p>RWY04 : HME 1.7NM FM DER - 2.5NM to TT502 HYD 6.5NM to BAYGE - BAYGE PQD BAYGE - 6.5NM to SEIKO</p> <p>RWY05 : HME DER - 2.7NM to TT502 HYD 6.5NM to BAYGE - BAYGE PQD BAYGE - 6.5NM to SEIKO</p>
DME GAP	<p>RWY16R : DER - 1.2NM FM DER RWY16L : DER - 1.0NM FM DER RWY34R : DER - 1.0NM FM DER RWY34L : DER - 0.5NM FM DER RWY04 : DER - 1.7NM FM DER RWY22 : DER - 1.4NM FM DER</p>	
Inappropriate Nav aids	See AD1.1.6.10.3.Inappropriate NAVAIDS for RNAV1	

VAR8°W(2019)

NINOX TWO DEPARTURE

CHANGE : DME GAP for RWY22. RTE FM RWY22 established. PROC renamed.



STANDARD DEPARTURE CHART-INSTRUMENT

RJTT/TOKYO INTL

RNAV SID

NINOX TWO DEPARTURE

RWY16R : Climb on HDG 158° at or above 500FT, direct to T6R12,
to TT631, to BAYGE at or above 9000FT, to SEIKO at or above
13000FT, to NINOX at or above FL170.

RWY16L : Climb on HDG 158° at or above 500FT, direct to T6L22,
to TT631, to BAYGE at or above 9000FT, to SEIKO at or above
13000FT, to NINOX at or above FL170.

RWY34L/34R : Climb on HDG 338° at or above 700FT, turn right direct to
TT502, to LOCUP at or above 5000FT, to BAYGE at or above
9000FT, to SEIKO at or above 13000FT, to NINOX at or above
FL170.

RWY04 : Climb on HDG 042° at or above 700FT, turn right direct to TT502,
to LOCUP at or above 5000FT, to BAYGE at or above 9000FT,
to SEIKO at or above 13000FT, to NINOX at or above FL170.

RWY05 : Climb on HDG 050° at or above 500FT, direct to TT501, turn right
direct to TT502, to LOCUP at or above 5000FT, to BAYGE at or
above 9000FT, to SEIKO at or above 13000FT, to NINOX at or
above FL170.

RWY22 : Climb on HDG 222° at or above 600FT, turn left direct to HOBBS,
to BASSA, to UMUKI, to PIPER at or above 9000FT, to SATOL,
to CURVA at or above FL150, to NINOX at or above FL170.

Note RWY34L/34R/04 : 5.0% climb gradient required up to 700FT.
RWY05 : 5.0% climb gradient required up to 500FT.
RWY22 : 5.0% climb gradient required up to 600FT.

CHANGE : RTE FM RWY22 established. PROC renamed.

STANDARD DEPARTURE CHART-INSTRUMENT

RJTT/TOKYO INTL

RNAV SID

NINOX TWO DEPARTURE

RWY16R

Serial Number	Path Descriptor	Waypoint Identifier	Fly Over	Course *M(T)	Magnetic Variation	Distance (NM)	Turn Direction	Altitude (FT)	Speed (KIAS)	Vertical Angle	Navigation Specification
001	VA	-	-	158 (150.0)	-7.5	-	-	+500	-	-	RNAV1
002	DF	T6R12	-	-	-7.5	-	-	-	-	-	RNAV1
003	TF	TT631	-	247 (239.8)	-7.5	5.6	-	-	-	-	RNAV1
004	TF	BAYGE	-	334 (327.0)	-7.5	5.0	-	+9000	-	-	RNAV1
005	TF	SEIKO	-	295 (287.8)	-7.5	11.4	-	+13000	-	-	RNAV1
006	TF	NINOX	-	280 (272.9)	-7.5	16.5	-	+FL170	-	-	RNAV1

RWY16L

Serial Number	Path Descriptor	Waypoint Identifier	Fly Over	Course *M(T)	Magnetic Variation	Distance (NM)	Turn Direction	Altitude (FT)	Speed (KIAS)	Vertical Angle	Navigation Specification
001	VA	-	-	158 (150.0)	-7.5	-	-	+500	-	-	RNAV1
002	DF	T6L22	-	-	-7.5	-	-	-	-	-	RNAV1
003	TF	TT631	-	247 (239.8)	-7.5	6.6	-	-	-	-	RNAV1
004	TF	BAYGE	-	334 (327.0)	-7.5	5.0	-	+9000	-	-	RNAV1
005	TF	SEIKO	-	295 (287.8)	-7.5	11.4	-	+13000	-	-	RNAV1
006	TF	NINOX	-	280 (272.9)	-7.5	16.5	-	+FL170	-	-	RNAV1

RWY34L/RWY34R

Serial Number	Path Descriptor	Waypoint Identifier	Fly Over	Course *M(T)	Magnetic Variation	Distance (NM)	Turn Direction	Altitude (FT)	Speed (KIAS)	Vertical Angle	Navigation Specification
001	VA	-	-	338 (330.0)	-7.5	-	-	+700	-	-	RNAV1
002	DF	TT502	-	-	-7.5	-	R	-	-	-	RNAV1
003	TF	LOCUP	-	198 (190.9)	-7.5	5.2	-	+5000	-	-	RNAV1
004	TF	BAYGE	-	268 (260.6)	-7.5	10.5	-	+9000	-	-	RNAV1
005	TF	SEIKO	-	295 (287.8)	-7.5	11.4	-	+13000	-	-	RNAV1
006	TF	NINOX	-	280 (272.9)	-7.5	16.5	-	+FL170	-	-	RNAV1

CHANGE : PROC renamed

STANDARD DEPARTURE CHART-INSTRUMENT

RJTT/TOKYO INTL

RNAV SID

RWY04

Serial Number	Path Descriptor	Waypoint Identifier	Fly Over	Course *M(*T)	Magnetic Variation	Distance (NM)	Turn Direction	Altitude (FT)	Speed (KIAS)	Vertical Angle	Navigation Specification
001	VA	-	-	042 (034.9)	-7.5	-	-	+700	-	-	RNAV1
002	DF	TT502	-	-	-7.5	-	R	-	-	-	RNAV1
003	TF	LOCUP	-	198 (190.9)	-7.5	5.2	-	+5000	-	-	RNAV1
004	TF	BAYGE	-	268 (260.6)	-7.5	10.5	-	+9000	-	-	RNAV1
005	TF	SEIKO	-	295 (287.8)	-7.5	11.4	-	+13000	-	-	RNAV1
006	TF	NINOX	-	280 (272.9)	-7.5	16.5	-	+FL170	-	-	RNAV1

RWY05

Serial Number	Path Descriptor	Waypoint Identifier	Fly Over	Course *M(*T)	Magnetic Variation	Distance (NM)	Turn Direction	Altitude (FT)	Speed (KIAS)	Vertical Angle	Navigation Specification
001	VA	-	-	050 (042.4)	-7.5	-	-	+500	-	-	RNAV1
002	DF	TT501	Y	-	-7.5	-	-	-	-	-	RNAV1
003	DF	TT502	-	-	-7.5	-	R	-	-	-	RNAV1
004	TF	LOCUP	-	198 (190.9)	-7.5	5.2	-	+5000	-	-	RNAV1
005	TF	BAYGE	-	268 (260.6)	-7.5	10.5	-	+9000	-	-	RNAV1
006	TF	SEIKO	-	295 (287.8)	-7.5	11.4	-	+13000	-	-	RNAV1
007	TF	NINOX	-	280 (272.9)	-7.5	16.5	-	+FL170	-	-	RNAV1

STANDARD DEPARTURE CHART-INSTRUMENT

RJTT/TOKYO INTL

RNAV SID

RWY22

Serial Number	Path Descriptor	Waypoint Identifier	Fly Over	Course °M(°T)	Magnetic Variation	Distance (NM)	Turn Direction	Altitude (FT)	Speed (KIAS)	Vertical Angle	Navigation Specification
001	VA	-	-	222 (214.9)	-7.5	-	-	+600	-	-	RNAV1
002	DF	HOBBS	-	-	-7.5	-	L	-	-	-	RNAV1
003	TF	BASSA	-	187 (179.9)	-7.5	5.8	-	-	-	-	RNAV1
004	TF	UMUKI	-	171 (163.9)	-7.5	9.2	-	-	-	-	RNAV1
005	TF	PIPER	-	235 (227.4)	-7.5	3.5	-	+9000	-	-	RNAV1
006	TF	SATOL	-	235 (227.4)	-7.5	5.5	-	-	-	-	RNAV1
007	TF	CURVA	-	300 (292.2)	-7.5	8.2	-	+FL150	-	-	RNAV1
008	TF	NINOX	-	327 (319.6)	-7.5	27.1	-	+FL170	-	-	RNAV1

Waypoint Coordinates

Waypoint Identifier	Coordinates	Waypoint Identifier	Coordinates
BASSA	352108.8N / 1394542.2E	SEIKO	352904.5N / 1393005.0E
BAYGE	352535.4N / 1394327.4E	T6L22	352441.2N / 1395345.4E
CURVA	350919.0N / 1393124.4E	T6R12	352413.6N / 1395247.1E
HOBBS	352653.9N / 1394541.3E	TT501	353328.7N / 1395029.9E
LOCUP	352718.8N / 1395608.5E	TT502	353224.4N / 1395720.7E
NINOX	352953.4N / 1390953.1E	TT631	352123.4N / 1394648.6E
PIPER	350958.3N / 1394542.0E	UMUKI	351219.1N / 1394849.2E
SATOL	350613.3N / 1394043.4E		

CHANGE : RTE FM RWY22 established. BASSA, CURVA, HOBBS, PIPER, SATOL, UMUKI established.

※日本語記載部分は原告代理人作成

(航空路誌参照番号)

RJTT AD2.24-SID-22

AIP Japan
TOKYO INTL

STANDARD DEPARTURE CHART-INSTRUMENT

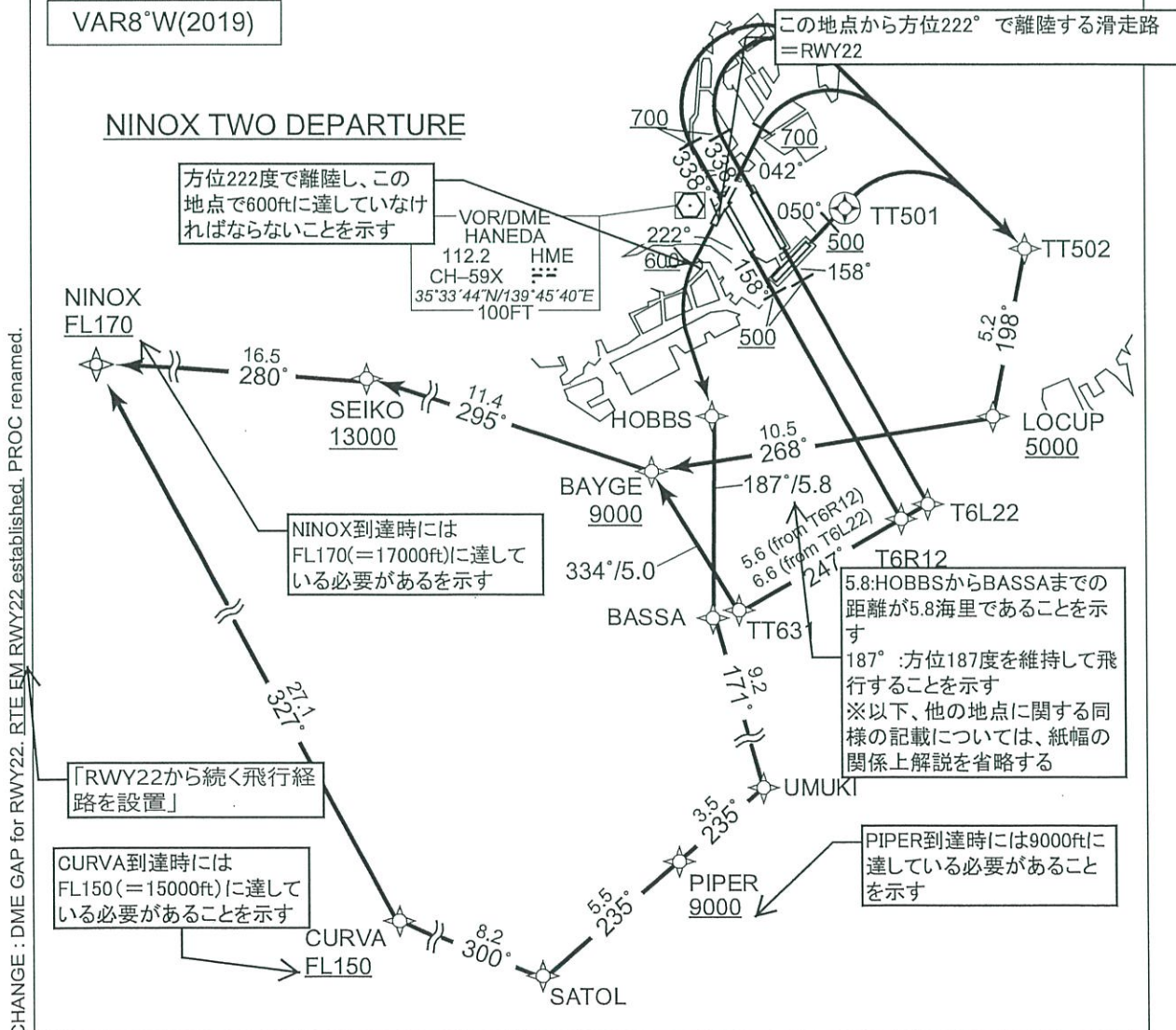
RJTT/TOKYO INTL

RNAV SID

NINOX TWO DEPARTURE		RNAV1
<p>Note 1) DME/DME/IRU or GNSS required. ※The aircraft equipped with only DME/DME/IRU must be able to update its position without delay at the starting point of take-off rolling. 2) RADAR service required.</p>		<p>RWY16R : HME 1.2NM FM DER - 3.8NM to T6R12 HYD T6R12 - TT631 PQD 1.0NM to BAYGE - 6.5NM to SEIKO RWY16L : HME 1.0NM FM DER - 4.7NM to T6L22 HYD 5.6NM to TT631 - TT631 PQD 1.0NM to BAYGE - 6.5NM to SEIKO RWY34R : HME 1.0NM FM DER - 2.5NM to TT502 HYD 6.5NM to BAYGE - BAYGE PQD BAYGE - 6.5NM to SEIKO RWY34L : HME 0.5NM FM DER - 2.5NM to TT502 HYD 6.5NM to BAYGE - BAYGE PQD BAYGE - 6.5NM to SEIKO RWY04 : HME 1.7NM FM DER - 2.5NM to TT502 HYD 6.5NM to BAYGE - BAYGE PQD BAYGE - 6.5NM to SEIKO RWY05 : HME DER - 2.7NM to TT502 HYD 6.5NM to BAYGE - BAYGE PQD BAYGE - 6.5NM to SEIKO</p>
DME GAP	<p>RWY16R : DER - 1.2NM FM DER RWY16L : DER - 1.0NM FM DER RWY34R : DER - 1.0NM FM DER RWY34L : DER - 0.5NM FM DER RWY04 : DER - 1.7NM FM DER RWY22 : DER - 1.4NM FM DER</p>	
Inappropriate Nav aids	See AD1.1.6.10.3.Inappropriate NAVAIDS for RNAV1	

VAR8°W(2019)

NINOX TWO DEPARTURE



STANDARD DEPARTURE CHART-INSTRUMENT

RJTT/TOKYO INTL

RNAV SID

NINOX TWO DEPARTURE

RWY16R : Climb on HDG 158° at or above 500FT, direct to T6R12, to TT631, to BAYGE at or above 9000FT, to SEIKO at or above 13000FT, to NINOX at or above FL170.

RWY16L : Climb on HDG 158° at or above 500FT, direct to T6L22, to TT631, to BAYGE at or above 9000FT, to SEIKO at or above 13000FT, to NINOX at or above FL170.

RWY34L/34R : Climb on HDG 338° at or above 700FT, turn right direct to TT502, to LOCUP at or above 5000FT, to BAYGE at or above 9000FT, to SEIKO at or above 13000FT, to NINOX at or above FL170.

RWY04 : Climb on HDG 042° at or above 700FT, turn right direct to TT502, to LOCUP at or above 5000FT, to BAYGE at or above 9000FT, to SEIKO at or above 13000FT, to NINOX at or above FL170.

RWY05 : Climb on HDG 050° at or above 500FT, direct to TT501, turn right direct to TT502, to LOCUP at or above 5000FT, to BAYGE at or above 9000FT, to SEIKO at or above 13000FT, to NINOX at or above FL170.

RWY22 : Climb on HDG 222° at or above 600FT, turn left direct to HOBBS, to BASSA, to UMUKI, to PIPER at or above 9000FT, to SATOL, to CURVA at or above FL150, to NINOX at or above FL170.

Note RWY34L/34R/04 : 5.0% climb gradient required up to 700FT.
RWY05 : 5.0% climb gradient required up to 500FT.
RWY22 : 5.0% climb gradient required up to 600FT.

CHANGE : RTE FM RWY22 established. PROC renamed.

RWY: 滑走路 (Runway) 22:
方位222度を1/10した数字
で示された、滑走路番号

針路 (HDG=Heading) を222度にとり、600ft以上へ
上昇せよ。左旋回し、直接、HOBBS地点、BASSA
地点、UMUKI地点を經由し、PIPER地点を9000ft以
上で飛行せよ。SATOLを經由し、CURVA地点を
FL150(=15000ft)以上で飛行せよ。NINOX地点を
FL170(=17000ft)以上で飛行せよ。

STANDARD DEPARTURE CHART-INSTRUMENT

RJTT/TOKYO INTL

RNAV SID

NINOX TWO DEPARTURE

RWY16R

Serial Number	Path Descriptor	Waypoint Identifier	Fly Over	Course *M(T)	Magnetic Variation	Distance (NM)	Turn Direction	Altitude (FT)	Speed (KIAS)	Vertical Angle	Navigation Specification
001	VA	-	-	158 (150.0)	-7.5	-	-	+500	-	-	RNAV1
002	DF	T6R12	-	-	-7.5	-	-	-	-	-	RNAV1
003	TF	TT631	-	247 (239.8)	-7.5	5.6	-	-	-	-	RNAV1
004	TF	BAYGE	-	334 (327.0)	-7.5	5.0	-	+9000	-	-	RNAV1
005	TF	SEIKO	-	295 (287.8)	-7.5	11.4	-	+13000	-	-	RNAV1
006	TF	NINOX	-	280 (272.9)	-7.5	16.5	-	+FL170	-	-	RNAV1

RWY16L

Serial Number	Path Descriptor	Waypoint Identifier	Fly Over	Course *M(T)	Magnetic Variation	Distance (NM)	Turn Direction	Altitude (FT)	Speed (KIAS)	Vertical Angle	Navigation Specification
001	VA	-	-	158 (150.0)	-7.5	-	-	+500	-	-	RNAV1
002	DF	T6L22	-	-	-7.5	-	-	-	-	-	RNAV1
003	TF	TT631	-	247 (239.8)	-7.5	6.6	-	-	-	-	RNAV1
004	TF	BAYGE	-	334 (327.0)	-7.5	5.0	-	+9000	-	-	RNAV1
005	TF	SEIKO	-	295 (287.8)	-7.5	11.4	-	+13000	-	-	RNAV1
006	TF	NINOX	-	280 (272.9)	-7.5	16.5	-	+FL170	-	-	RNAV1

RWY34L/RWY34R

Serial Number	Path Descriptor	Waypoint Identifier	Fly Over	Course *M(T)	Magnetic Variation	Distance (NM)	Turn Direction	Altitude (FT)	Speed (KIAS)	Vertical Angle	Navigation Specification
001	VA	-	-	338 (330.0)	-7.5	-	-	+700	-	-	RNAV1
002	DF	TT502	-	-	-7.5	-	R	-	-	-	RNAV1
003	TF	LOCUP	-	198 (190.9)	-7.5	5.2	-	+5000	-	-	RNAV1
004	TF	BAYGE	-	268 (260.6)	-7.5	10.5	-	+9000	-	-	RNAV1
005	TF	SEIKO	-	295 (287.8)	-7.5	11.4	-	+13000	-	-	RNAV1
006	TF	NINOX	-	280 (272.9)	-7.5	16.5	-	+FL170	-	-	RNAV1

CHANGE : PROC renamed

STANDARD DEPARTURE CHART-INSTRUMENT

RJTT/TOKYO INTL

RNAV SID

RWY04

Serial Number	Path Descriptor	Waypoint Identifier	Fly Over	Course *M(*T)	Magnetic Variation	Distance (NM)	Turn Direction	Altitude (FT)	Speed (KIAS)	Vertical Angle	Navigation Specification
001	VA	-	-	042 (034.9)	-7.5	-	-	+700	-	-	RNAV1
002	DF	TT502	-	-	-7.5	-	R	-	-	-	RNAV1
003	TF	LOCUP	-	198 (190.9)	-7.5	5.2	-	+5000	-	-	RNAV1
004	TF	BAYGE	-	268 (260.6)	-7.5	10.5	-	+9000	-	-	RNAV1
005	TF	SEIKO	-	295 (287.8)	-7.5	11.4	-	+13000	-	-	RNAV1
006	TF	NINOX	-	280 (272.9)	-7.5	16.5	-	+FL170	-	-	RNAV1

RWY05

Serial Number	Path Descriptor	Waypoint Identifier	Fly Over	Course *M(*T)	Magnetic Variation	Distance (NM)	Turn Direction	Altitude (FT)	Speed (KIAS)	Vertical Angle	Navigation Specification
001	VA	-	-	050 (042.4)	-7.5	-	-	+500	-	-	RNAV1
002	DF	TT501	Y	-	-7.5	-	-	-	-	-	RNAV1
003	DF	TT502	-	-	-7.5	-	R	-	-	-	RNAV1
004	TF	LOCUP	-	198 (190.9)	-7.5	5.2	-	+5000	-	-	RNAV1
005	TF	BAYGE	-	268 (260.6)	-7.5	10.5	-	+9000	-	-	RNAV1
006	TF	SEIKO	-	295 (287.8)	-7.5	11.4	-	+13000	-	-	RNAV1
007	TF	NINOX	-	280 (272.9)	-7.5	16.5	-	+FL170	-	-	RNAV1

STANDARD DEPARTURE CHART-INSTRUMENT

RJTT/TOKYO INTL

RNAV SID

RWY22

Serial Number	Path Descriptor	Waypoint Identifier	Fly Over	Course *M(T)	Magnetic Variation	Distance (NM)	Turn Direction	Altitude (FT)	Speed (KIAS)	Vertical Angle	Navigation Specification
001	VA	-	-	222 (214.9)	-7.5	-	-	+600	-	-	RNAV1
002	DF	HOBBS	-	-	-7.5	-	L	-	-	-	RNAV1
003	TF	BASSA	-	187 (179.9)	-7.5	5.8	-	-	-	-	RNAV1
004	TF	UMUKI	-	171 (163.9)	-7.5	9.2	-	-	-	-	RNAV1
005	TF	PIPER	-	235 (227.4)	-7.5	3.5	-	+9000	-	-	RNAV1
006	TF	SATOL	-	235 (227.4)	-7.5	5.5	-	-	-	-	RNAV1
007	TF	CURVA	-	300 (292.2)	-7.5	8.2	-	+FL150	-	-	RNAV1
008	TF	NINOX	-	327 (319.6)	-7.5	27.1	-	+FL170	-	-	RNAV1

Waypoint Coordinates

Waypoint Identifier	Coordinates	Waypoint Identifier	Coordinates
BASSA	352108.8N / 1394542.2E	SEIKO	352904.5N / 1393005.0E
BAYGE	352535.4N / 1394327.4E	T6L22	352441.2N / 1395345.4E
CURVA	350919.0N / 1393124.4E	T6R12	352413.6N / 1395247.1E
HOBBS	352653.9N / 1394541.3E	TT501	353328.7N / 1395029.9E
LOCUP	352718.8N / 1395608.5E	TT502	353224.4N / 1395720.7E
NINOX	352953.4N / 1390953.1E	TT631	352123.4N / 1394648.6E
PIPER	350958.3N / 1394542.0E	UMUKI	351219.1N / 1394849.2E
SATOL	350613.3N / 1394043.4E		

CHANGE : RTE FM RWY22 established. BASSA, CURVA, HOBBS, PIPER, SATOL, UMUKI established.